



# **Stainless Fasteners** **Stock List 2011**



# Hobson Engineering Co. Pty. Ltd

A.B.N. 38 000 289 958

## Quality Fasteners Since 1935

### Sydney

10 Clay Place  
Eastern Creek NSW 2766

Ph: (02) 8818 0222

Fax: (02) 9620 1850

email: salesnsw@hobson.com.au

### Brisbane

62 Murdoch Circuit  
Acacia Ridge Qld 4110

Ph: (07) 3273 0777

Fax: (07) 3711 4551

email: salesqld@hobson.com.au

### Melbourne

Unit 1 155 Abbots Road  
Dandenong South Vic 3175

Ph: (03) 9797 3333

Fax: (03) 9799 3081

email: salesvic@hobson.com.au

### Perth

133 Beringarra Ave  
Malaga WA 6090

Ph: (08) 9241 9888

Fax: (08) 9248 8806

email: saleswa@hobson.com.au

### Tasmania Agent

R.M. Daniels & Co P/L

29 Mornington Road

Mornington Tas 7018

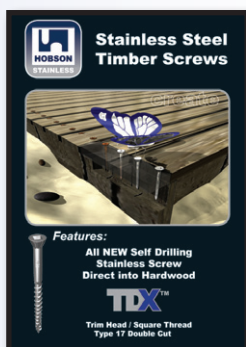
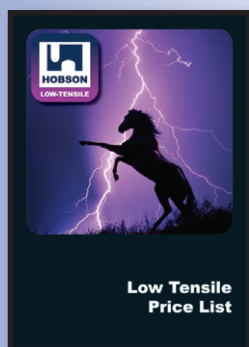
Ph: (03) 6244 7455

Fax: (03) 6244 7317

[www.hobson.com.au](http://www.hobson.com.au)

Published by Hobson Engineering Co. Pty. Ltd.  
P.O. Box 320  
Horsley Park N.S.W. 2175

Look out for other released Hobson Publications.

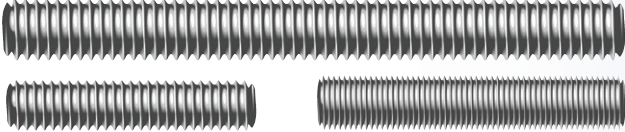
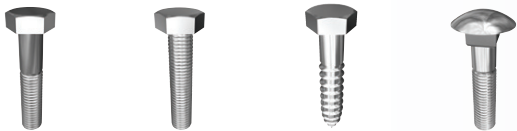
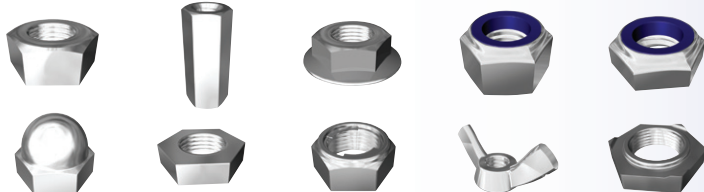









All rights reserved. Hobson Engineering Co. Pty. Ltd. is the owner of the copyright subsisting in this publication. Other than permitted by the Copyright Act, no part of this publication can be reproduced, copied or transmitted, in any form or by any means (electric, mechanical, photocopying, recording, storage in a retrieval system or otherwise), without the prior written consent of Hobson Engineering Co. Pty. Ltd. Hobson Engineering Co. Pty. Ltd. will vigorously pursue any breach of its copyright.

This publication is distributed on the basis and understanding that the publisher is not responsible for the results of any actions taken on the basis of information in this publication, nor for any error in or omission from this publication. The publisher expressly disclaims all and any liability and responsibility to any person, whether a reader of this publication or not, in respect of anything, and the consequences of anything, done or omitted to be done by any such person in reliance, whether wholly or partially, upon the whole or any part of the contents of this publication. Without limiting the generality of the foregoing the publisher accepts no liability for any loss or damage either direct or consequential arising out of or in relation to the use or application of the information or products referred to herein.

# Index



Allthread		2
Bolts		4
Nuts		28
Washers		38
Socket Screws		44
Machine Screws		60
Tapping & Wood Screws		73
Security Screws		78
Security Bits & Keys		82
Split Pins		
Technical	Thread Pitch Table	86

# Allthread Metric

## METRIC ALLTHREAD 1MTR DIN 975

Part	Size	Length (mm)	Pack	Stock	
				304/A2	316/A4
AL16PCM031000	M3	1000	10		✓
AL??PCM041000	M4	1000	10	✓	✓
AL??PCM051000	M5	1000	10	✓	✓
AL??PCM061000	M6	1000	10	✓	✓
AL??PCM081000	M8	1000	10	✓	✓
AL??PCM101000	M10	1000	10	✓	✓
AL??PCM121000	M12	1000	5	✓	✓
AL16PCM141000	M14	1000	1		✓
AL??PCM161000	M16	1000	5	✓	✓
AL16PCM181000	M18	1000	1		✓
AL??PCM201000	M20	1000	5	✓	✓
AL16PCM221000	M22	1000	1		✓
AL??PCM241000	M24	1000	5	✓	✓
AL16PCM271000	M27	1000	1		✓
AL16PCM301000	M30	1000	2		✓
AL16PCM331000	M33	1000	1		✓
AL16PCM361000	M36	1000	1		✓
AL16PCM421000	M42	1000	1		✓
AL16PCM481000	M48	1000	1		✓
AL16PCM641000	M64	1000	1		✓

## METRIC ALLTHREAD 3MTR DIN 975

Part	Size	Length (mm)	Pack	Stock	
				304/A2	316/A4
AL??PCM063000	M6	3000	1	✓	✓
AL??PCM083000	M8	3000	1	✓	✓
AL??PCM103000	M10	3000	1	✓	✓
AL??PCM123000	M12	3000	1	✓	✓
AL??PCM163000	M16	3000	1	✓	✓
AL??PCM203000	M20	3000	1	✓	✓
AL??PCM243000	M24	3000	1	✓	✓
AL16PCM273000	M27	3000	1		✓
AL16PCM303000	M30	3000	1		✓
AL16PCM333000	M33	3000	1		✓
AL16PCM363000	M36	3000	1		✓
AL16PCM483000	M48	3000	1		✓



# Allthread

## UNC / BSW / UNF / BSF



### UNC ALLTHREAD 3FT

IFI 136C

Part	Size	Length	Pack	Stock	
				304/A2	316/A4
AL16PC0120914	1/8"	3FT	10		✓
AL16PC0180914	3/16"	3FT	10		✓
AL??PC0250914	1/4"	3FT	10	✓	✓
AL??PC0310914	5/16"	3FT	10	✓	✓
AL??PC0370914	3/8"	3FT	10	✓	✓
AL16PC0430914	7/16"	3FT	1		✓
AL??PC0500914	1/2"	3FT	5	✓	✓
AL16PC0560914	9/16"	3FT	1		✓
AL??PC0620914	5/8"	3FT	5	✓	✓
AL??PC0750914	3/4"	3FT	5	✓	✓
AL??PC0870914	7/8"	3FT	5	✓	✓
AL??PC1000914	1"	3FT	5	✓	✓
AL16PC1120914	1 1/8"	3FT	1		✓
AL16PC1250914	1 1/4"	3FT	1		✓

### BSW ALLTHREAD 3FT

AS3501

Part	Size	Length	Pack	Stock	
				304/A2	316/A4
AL??PW0500914	1/2"	3FT	5	✓	✓

### UNF ALLTHREAD 3FT

IFI 136C

Part	Size	Length	Pack	Stock	
				316/A4	
AL16PF0250914	1/4"	3FT	1	✓	
AL16PF0310914	5/16"	3FT	1	✓	
AL16PF0370914	3/8"	3FT	1	✓	
AL16PF0500914	1/2"	3FT	1	✓	

### BSF ALLTHREAD 3FT

AS3501

Part	Size	Length	Pack	Stock	
				316/A4	
AL16PS0250914	1/4"	3FT	1	✓	
AL16PS0310914	5/16"	3FT	1	✓	
AL16PS0370914	3/8"	3FT	1	✓	



?? = 04: 304 Stainless  
16: 316 Stainless

# Hex Bolt



## METRIC HEX BOLT DIN 931

Part	Size	Length (mm)	Pack	Stock	
				304/A2	316/A4
BH??PCM060030	M6	30	100	✓	✓
BH??PCM060035	M6	35	100	✓	✓
BH??PCM060040	M6	40	100	✓	✓
BH??PCM060045	M6	45	100	✓	✓
BH??PCM060050	M6	50	100	✓	✓
BH??PCM060055	M6	55	50	✓	✓
BH??PCM060060	M6	60	50	✓	✓
BH??PCM060065	M6	65	50	✓	✓
BH??PCM060070	M6	70	50	✓	✓
BH??PCM060075	M6	75	50	✓	✓
BH??PCM060080	M6	80	50	✓	✓
BH??PCM060090	M6	90	50	✓	✓
BH??PCM060100	M6	100	50	✓	✓
BH16PCM060110	M6	110	50		✓
BH??PCM060130	M6	130	25	✓	✓
BH??PCM060150	M6	150	25	✓	✓



## METRIC HEX BOLT DIN 931

Part	Size	Length (mm)	Pack	Stock	
				304/A2	316/A4
BH??PCM080035	M8	35	100	✓	✓
BH??PCM080040	M8	40	100	✓	✓
BH??PCM080045	M8	45	100	✓	✓
BH??PCM080050	M8	50	100	✓	✓
BH??PCM080055	M8	55	50	✓	✓
BH??PCM080060	M8	60	50	✓	✓
BH??PCM080065	M8	65	50	✓	✓
BH??PCM080070	M8	70	50	✓	✓
BH??PCM080075	M8	75	50	✓	✓
BH??PCM080080	M8	80	50	✓	✓
BH??PCM080090	M8	90	50	✓	✓
BH??PCM080100	M8	100	50	✓	✓
BH04PCM080110	M8	110	25	✓	
BH??PCM080120	M8	120	25	✓	✓
BH??PCM080130	M8	130	25	✓	✓
BH04PCM080140	M8	140	25	✓	
BH??PCM080150	M8	150	25	✓	✓

# Hex Bolt



## METRIC HEX BOLT DIN 931

Part	Size	Length (mm)	Pack	Stock	
				304/A2	316/A4
BH04PCM100035	M10	35	100	✓	
BH??PCM100040	M10	40	100	✓	✓
BH??PCM100045	M10	45	100	✓	✓
BH??PCM100050	M10	50	100	✓	✓
BH??PCM100055	M10	55	50	✓	✓
BH??PCM100060	M10	60	50	✓	✓
BH??PCM100065	M10	65	50	✓	✓
BH??PCM100070	M10	70	50	✓	✓
BH??PCM100075	M10	75	50	✓	✓
BH??PCM100080	M10	80	50	✓	✓
BH??PCM100090	M10	90	50	✓	✓
BH??PCM100100	M10	100	50	✓	✓
BH??PCM100110	M10	110	25	✓	✓
BH??PCM100120	M10	120	25	✓	✓
BH??PCM100130	M10	130	25	✓	✓
BH??PCM100140	M10	140	25	✓	✓
BH??PCM100150	M10	150	25	✓	✓
BH??PCM100160	M10	160	25	✓	✓
BH??PCM100170	M10	170	25	✓	✓
BH??PCM100180	M10	180	25	✓	✓
BH04PCM100190	M10	190	25	✓	
BH??PCM100200	M10	200	25	✓	✓
BH04PCM100210	M10	210	10	✓	
BH??PCM100220	M10	220	10	✓	✓
BH04PCM100230	M10	230	10	✓	
BH??PCM100240	M10	240	10	✓	✓
BH??PCM100250	M10	250	10	✓	✓
BH??PCM100260	M10	260	10	✓	✓
BH04PCM100270	M10	270	10	✓	
BH??PCM100280	M10	280	10	✓	✓
BH04PCM100290	M10	290	10	✓	
BH??PCM100300	M10	300	10	✓	✓



?? = 04: 304 Stainless  
16: 316 Stainless



# Hex Bolt

## METRIC HEX BOLT DIN 931

Part	Size	Length (mm)	Pack	Stock	
				304/A2	316/A4
BH??PCM120045	M12	45	50	✓	✓
BH??PCM120050	M12	50	25	✓	✓
BH??PCM120055	M12	55	25	✓	✓
BH??PCM120060	M12	60	25	✓	✓
BH??PCM120065	M12	65	25	✓	✓
BH??PCM120070	M12	70	25	✓	✓
BH??PCM120075	M12	75	25	✓	✓
BH??PCM120080	M12	80	25	✓	✓
BH??PCM120090	M12	90	25	✓	✓
BH??PCM120100	M12	100	25	✓	✓
BH??PCM120110	M12	110	25	✓	✓
BH??PCM120120	M12	120	25	✓	✓
BH??PCM120130	M12	130	25	✓	✓
BH??PCM120140	M12	140	25	✓	✓
BH??PCM120150	M12	150	25	✓	✓
BH??PCM120160	M12	160	25	✓	✓
BH??PCM120170	M12	170	25	✓	✓
BH??PCM120180	M12	180	25	✓	✓
BH??PCM120190	M12	190	25	✓	✓
BH??PCM120200	M12	200	25	✓	✓
BH??PCM120210	M12	210	25	✓	✓
BH??PCM120220	M12	220	25	✓	✓
BH04PCM120230	M12	230	25	✓	
BH??PCM120240	M12	240	25	✓	✓
BH??PCM120250	M12	250	25	✓	✓
BH??PCM120260	M12	260	25	✓	✓
BH04PCM120270	M12	270	25	✓	
BH??PCM120280	M12	280	25	✓	✓
BH04PCM120290	M12	290	25	✓	
BH??PCM120300	M12	300	25	✓	✓



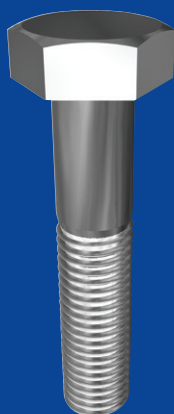
# Hex Bolt



## METRIC HEX BOLT DIN 931

Part	Size	Length (mm)	Pack	Stock	
				304/A2	316/A4
BH??PCM160050	M16	50	25	✓	✓
BH??PCM160055	M16	55	25	✓	✓
BH??PCM160060	M16	60	25	✓	✓
BH??PCM160065	M16	65	25	✓	✓
BH??PCM160070	M16	70	25	✓	✓
BH??PCM160075	M16	75	25	✓	✓
BH??PCM160080	M16	80	25	✓	✓
BH??PCM160090	M16	90	25	✓	✓
BH??PCM160100	M16	100	25	✓	✓
BH??PCM160110	M16	110	25	✓	✓
BH??PCM160120	M16	120	25	✓	✓
BH??PCM160130	M16	130	20	✓	✓
BH??PCM160140	M16	140	20	✓	✓
BH??PCM160150	M16	150	20	✓	✓
BH??PCM160160	M16	160	20	✓	✓
BH04PCM160170	M16	170	10	✓	
BH??PCM160180	M16	180	10	✓	✓
BH04PCM160190	M16	190	10	✓	
BH??PCM160200	M16	200	10	✓	✓
BH04PCM160210	M16	210	10	✓	
BH??PCM160220	M16	220	10	✓	✓
BH04PCM160230	M16	230	10	✓	
BH??PCM160240	M16	240	10	✓	✓
BH04PCM160250	M16	250	10	✓	
BH04PCM160260	M16	260	10	✓	
BH04PCM160270	M16	270	10	✓	
BH04PCM160280	M16	280	10	✓	
BH04PCM160290	M16	290	10	✓	
BH??PCM160300	M16	300	10	✓	✓





# Hex Bolt

## METRIC HEX BOLT DIN 931

Part	Size	Length (mm)	Pack	Stock	
				304/A2	316/A4
BH??PCM200060	M20	60	25	✓	✓
BH??PCM200065	M20	65	25	✓	✓
BH??PCM200070	M20	70	25	✓	✓
BH??PCM200075	M20	75	20	✓	✓
BH??PCM200080	M20	80	20	✓	✓
BH??PCM200090	M20	90	10	✓	✓
BH??PCM200100	M20	100	10	✓	✓
BH??PCM200110	M20	110	10	✓	✓
BH??PCM200120	M20	120	10	✓	✓
BH??PCM200130	M20	130	10	✓	✓
BH??PCM200140	M20	140	10	✓	✓
BH??PCM200150	M20	150	10	✓	✓
BH??PCM200160	M20	160	10	✓	✓
BH16PCM200170	M20	170	10		✓
BH16PCM200180	M20	180	10		✓
BH??PCM200190	M20	190	10	✓	✓
BH??PCM200200	M20	200	10	✓	✓
BH16PCM200240	M20	240	10		✓
BH16PCM200250	M20	250	10		✓
BH16PCM200260	M20	260	10		✓
BH16PCM200300	M20	300	10		✓
BH04PCM200350	M20	350	10	✓	
BH04PCM200375	M20	375	10	✓	
BH04PCM200400	M20	400	10	✓	
BH04PCM200425	M20	425	10	✓	
BH04PCM200450	M20	450	10	✓	
BH04PCM200500	M20	500	10	✓	
BH16PCM220090	M22	90	10		✓
BH16PCM220100	M22	100	10		✓
BH16PCM220120	M22	120	10		✓

# Hex Bolt



## METRIC HEX BOLT DIN 931

Part	Size	Length (mm)	Pack	Stock	
				304/A2	316/A4
BH16PCM240070	M24	70	10		✓
BH16PCM240075	M24	75	10		✓
BH??PCM240080	M24	80	10	✓	✓
BH??PCM240090	M24	90	10	✓	✓
BH??PCM240100	M24	100	10	✓	✓
BH??PCM240110	M24	110	10	✓	✓
BH??PCM240120	M24	120	10	✓	✓
BH??PCM240130	M24	130	10	✓	✓
BH??PCM240140	M24	140	10	✓	✓
BH??PCM240150	M24	150	10	✓	✓
BH??PCM240160	M24	160	10	✓	✓
BH04PCM240170	M24	170	10	✓	✓
BH??PCM240180	M24	180	10	✓	✓
BH??PCM240190	M24	190	10	✓	✓
BH??PCM240200	M24	200	10	✓	✓
BH16PCM240250	M24	250	10		✓
BH16PCM270090	M27	90	5		✓
BH16PCM270100	M27	100	5		✓
BH16PCM270110	M27	110	5		✓
BH16PCM270120	M27	120	5		✓
BH16PCM270130	M27	130	5		✓
BH16PCM270140	M27	140	5		✓
BH16PCM270150	M27	150	5		✓
BH16PCM270160	M27	160	5		✓
BH16PCM270170	M27	170	5		✓
BH16PCM300090	M30	90	5		✓
BH16PCM300100	M30	100	5		✓
BH16PCM300110	M30	110	5		✓
BH16PCM300120	M30	120	5		✓
BH16PCM300130	M30	130	5		✓
BH16PCM300140	M30	140	5		✓
BH16PCM300150	M30	150	5		✓
BH16PCM300160	M30	160	5		✓
BH16PCM300170	M30	170	5		✓
BH16PCM300180	M30	180	5		✓
BH16PCM330100	M33	100	5		✓
BH16PCM330130	M33	130	5		✓
BH16PCM330160	M33	160	5		✓
BH16PCM330180	M33	180	5		✓



?? = 04: 304 Stainless  
16: 316 Stainless



# Hex Bolt

## METRIC HEX BOLT DIN 931

Part	Size	Length (mm)	Pack	Stock
				<b>316/A4</b>
BH16PCM360100	M36	100	5	✓
BH16PCM360110	M36	110	5	✓
BH16PCM360120	M36	120	5	✓
BH16PCM360130	M36	130	5	✓
BH16PCM360140	M36	140	5	✓
BH16PCM360150	M36	150	5	✓
BH16PCM360180	M36	180	5	✓
BH16PCM360200	M36	200	5	✓
BH16PCM360250	M36	250	5	✓
BH16PCM390400	M39	400	1	✓
BH16PCM420450	M42	450	1	✓

# Hex Bolt



## UNC HEX BOLT ANSI B18.2.1

Part	Size	Length (inch)	Pack	Stock	
				304/A2	316/A4
BH??PC0250125	1/4"	1 1/4"	100	✓	✓
BH??PC0250150	1/4"	1 1/2"	100	✓	✓
BH??PC0250175	1/4"	1 3/4"	100	✓	✓
BH??PC0250200	1/4"	2"	100	✓	✓
BH??PC0250225	1/4"	2 1/4"	50	✓	✓
BH??PC0250250	1/4"	2 1/2"	50	✓	✓
BH04PC0250275	1/4"	2 3/4"	50	✓	
BH??PC0250300	1/4"	3"	50	✓	✓
BH??PC0250350	1/4"	3 1/2"	50	✓	✓
BH??PC0250400	1/4"	4"	50	✓	✓
BH??PC0250450	1/4"	4 1/2"	25	✓	✓
BH??PC0250500	1/4"	5"	25	✓	✓
BH04PC0250550	1/4"	5 1/2"	25	✓	
BH??PC0250600	1/4"	6"	25	✓	✓
BH??PC0310150	5/16"	1 1/2"	100	✓	✓
BH??PC0310175	5/16"	1 3/4"	100	✓	✓
BH??PC0310200	5/16"	2"	100	✓	✓
BH??PC0310225	5/16"	2 1/4"	50	✓	✓
BH??PC0310250	5/16"	2 1/2"	50	✓	✓
BH??PC0310275	5/16"	2 3/4"	50	✓	✓
BH??PC0310300	5/16"	3"	50	✓	✓
BH??PC0310350	5/16"	3 1/2"	50	✓	✓
BH??PC0310400	5/16"	4"	50	✓	✓
BH??PC0310450	5/16"	4 1/2"	25	✓	✓
BH??PC0310500	5/16"	5"	25	✓	✓
BH??PC0310550	5/16"	5 1/2"	25	✓	✓
BH??PC0310600	5/16"	6"	25	✓	✓
BH??PC0370150	3/8"	1 1/2"	100	✓	✓
BH??PC0370175	3/8"	1 3/4"	100	✓	✓
BH??PC0370200	3/8"	2"	100	✓	✓
BH??PC0370225	3/8"	2 1/4"	50	✓	✓
BH??PC0370250	3/8"	2 1/2"	50	✓	✓
BH??PC0370275	3/8"	2 3/4"	50	✓	✓
BH??PC0370300	3/8"	3"	50	✓	✓
BH??PC0370350	3/8"	3 1/2"	50	✓	✓
BH??PC0370400	3/8"	4"	50	✓	✓
BH16PC0370450	3/8"	4 1/2"	25		✓
BH??PC0370500	3/8"	5"	25	✓	✓
BH??PC0370550	3/8"	5 1/2"	25	✓	✓
BH??PC0370600	3/8"	6"	25	✓	✓
BH16PC0370700	3/8"	7"	25		✓
BH16PC0370800	3/8"	8"	25		✓



?? = 04: 304 Stainless  
16: 316 Stainless





# Hex Bolt

## UNC HEX BOLT ANSI B18.2.1

Part	Size	Length (inch)	Pack	Stock	
				304/A2	316/A4
BH16PC0430175	7/16"	1 3/4"	50		✓
BH16PC0430200	7/16"	2"	50		✓
BH16PC0430250	7/16"	2 1/2"	25		✓
BH16PC0430300	7/16"	3"	25		✓
BH??PC0500175	1/2"	1 3/4"	50	✓	✓
BH??PC0500200	1/2"	2"	50	✓	✓
BH16PC0500225	1/2"	2 1/4"	25		✓
BH??PC0500250	1/2"	2 1/2"	25	✓	✓
BH16PC0500275	1/2"	2 3/4"	25		✓
BH??PC0500300	1/2"	3"	25	✓	✓
BH16PC0500325	1/2"	3 1/4"	25		✓
BH??PC0500350	1/2"	3 1/2"	25	✓	✓
BH??PC0500400	1/2"	4"	25	✓	✓
BH??PC0500450	1/2"	4 1/2"	25	✓	✓
BH??PC0500500	1/2"	5"	25	✓	✓
BH16PC0500550	1/2"	5 1/2"	25		✓
BH??PC0500600	1/2"	6"	25	✓	✓
BH16PC0500650	1/2"	6 1/2"	25		✓
BH16PC0500700	1/2"	7"	25		✓
BH16PC0500750	1/2"	7 1/2"	25		✓
BH16PC0500800	1/2"	8"	25		✓
BH16PC0500850	1/2"	8 1/2"	10		✓
BH??PC0620200	5/8"	2"	25	✓	✓
BH??PC0620225	5/8"	2 1/4"	25	✓	✓
BH??PC0620250	5/8"	2 1/2"	25	✓	✓
BH??PC0620275	5/8"	2 3/4"	25	✓	✓
BH??PC0620300	5/8"	3"	25	✓	✓
BH??PC0620350	5/8"	3 1/2"	25	✓	✓
BH??PC0620400	5/8"	4"	25	✓	✓
BH??PC0620450	5/8"	4 1/2"	25	✓	✓
BH??PC0620500	5/8"	5"	20	✓	✓
BH??PC0620550	5/8"	5 1/2"	20	✓	✓
BH??PC0620600	5/8"	6"	20	✓	✓
BH16PC0620700	5/8"	7"	10		✓
BH16PC0620800	5/8"	8"	10		✓

# Hex Bolt



## UNC HEX BOLT ANSI B18.2.1

Part	Size	Length (inch)	Pack	Stock	
				304/A2	316/A4
BH??PC0750250	3/4"	2 1/2"	25	✓	✓
BH??PC0750275	3/4"	2 3/4"	25	✓	✓
BH??PC0750300	3/4"	3"	20	✓	✓
BH??PC0750350	3/4"	3 1/2"	10	✓	✓
BH??PC0750400	3/4"	4"	10	✓	✓
BH??PC0750450	3/4"	4 1/2"	10	✓	✓
BH??PC0750500	3/4"	5"	10	✓	✓
BH??PC0750550	3/4"	5 1/2"	10	✓	✓
BH??PC0750600	3/4"	6"	10	✓	✓
BH??PC0750700	3/4"	7"	10	✓	✓
BH16PC0870300	7/8"	3"	10		✓
BH16PC0870350	7/8"	3 1/2"	10		✓
BH16PC0870400	7/8"	4"	10		✓
BH16PC0870450	7/8"	4 1/2"	10		✓
BH16PC0870500	7/8"	5"	10		✓
BH16PC0870600	7/8"	6"	10		✓
BH16PC1000300	1"	3"	10		✓
BH16PC1000350	1"	3 1/2"	10		✓
BH16PC1000400	1"	4"	10		✓
BH16PC1000450	1"	4 1/2"	10		✓
BH16PC1000500	1"	5"	10		✓
BH16PC1000600	1"	6"	10		✓

## UNF HEX BOLT ANSI B18.2.1

Part	Size	Length (inch)	Pack	Stock	
				304/A2	
BH04PF0250125	1/4"	1 1/4"	50	✓	
BH04PF0310150	5/16"	1 1/2"	50	✓	
BH04PF0310200	5/16"	2"	50	✓	
BH04PF0310250	5/16"	2 1/2"	50	✓	
BH04PF0370150	3/8"	1 1/2"	50	✓	
BH04PF0370200	3/8"	2"	50	✓	
BH04PF0370250	3/8"	2 1/2"	50	✓	
BH04PF0500200	1/2"	2"	25	✓	
BH04PF0500250	1/2"	2 1/2"	25	✓	
BH04PF0500300	1/2"	3"	25	✓	
BH04PF0620300	5/8"	3"	25	✓	



?? = 04: 304 Stainless  
16: 316 Stainless

# Hex Bolt



## BSW HEX BOLT BS1083

Part	Size	Length	Pack	Stock
		(inch)		
BH16PW0500150	1/2"	1 1/2"	50	✓
BH16PW0500175	1/2"	1 3/4"	50	✓
BH16PW0500200	1/2"	2"	50	✓
BH16PW0500250	1/2"	2 1/2"	25	✓
BH16PW0500300	1/2"	3"	25	✓
BH16PW0500350	1/2"	3 1/2"	25	✓
BH16PW0500400	1/2"	4"	25	✓
BH16PW0500450	1/2"	4 1/2"	25	✓

## METRIC HEX SET SCREW DIN 933

Part	Size	Length	Pack	Stock	
		(mm)		304/A2	316/A4
BS04PCM030006	M3	6	100	✓	
BS04PCM030008	M3	8	100	✓	
BS04PCM030010	M3	10	100	✓	
BS04PCM030012	M3	12	100	✓	
BS04PCM030016	M3	16	100	✓	
BS04PCM030020	M3	20	100	✓	
BS04PCM030025	M3	25	100	✓	
BS04PCM030030	M3	30	100	✓	
BS04PCM040006	M4	6	100	✓	
BS??PCM040008	M4	8	100	✓	✓
BS??PCM040010	M4	10	100	✓	✓
BS??PCM040012	M4	12	100	✓	✓
BS??PCM040016	M4	16	100	✓	✓
BS??PCM040020	M4	20	100	✓	✓
BS??PCM040025	M4	25	100	✓	✓
BS04PCM040030	M4	30	100	✓	
BS04PCM040035	M4	35	100	✓	
BS04PCM040040	M4	40	100	✓	
BS04PCM040050	M4	50	100	✓	

# Hex Set Screw



## METRIC HEX SET SCREW DIN 933

Part	Size	Length (mm)	Pack	Stock	
				304/A2	316/A4
BS04PCM050008	M5	8	100	✓	
BS??PCM050010	M5	10	100	✓	✓
BS??PCM050012	M5	12	100	✓	✓
BS??PCM050016	M5	16	100	✓	✓
BS??PCM050020	M5	20	100	✓	✓
BS??PCM050025	M5	25	100	✓	✓
BS??PCM050030	M5	30	100	✓	✓
BS??PCM050035	M5	35	100	✓	✓
BS??PCM050040	M5	40	100	✓	✓
BS??PCM050045	M5	45	100	✓	✓
BS??PCM050050	M5	50	100	✓	✓
BS04PCM050055	M5	55	100	✓	
BS16PCM050060	M5	60	100		✓
BS??PCM060010	M6	10	100	✓	✓
BS??PCM060012	M6	12	100	✓	✓
BS??PCM060016	M6	16	100	✓	✓
BS??PCM060020	M6	20	100	✓	✓
BS??PCM060025	M6	25	100	✓	✓
BS??PCM060030	M6	30	100	✓	✓
BS??PCM060035	M6	35	100	✓	✓
BS??PCM060040	M6	40	100	✓	✓
BS??PCM060045	M6	45	100	✓	✓
BS??PCM060050	M6	50	100	✓	✓
BS??PCM060055	M6	55	50	✓	✓
BS??PCM060060	M6	60	50	✓	✓
BS??PCM060065	M6	65	50	✓	✓
BS??PCM060070	M6	70	50	✓	✓
BS??PCM060075	M6	75	50	✓	✓
BS??PCM060080	M6	80	50	✓	✓
BS??PCM060090	M6	90	50	✓	✓
BS??PCM060100	M6	100	50	✓	✓
BS04PCM060110	M6	110	25	✓	
BS04PCM060120	M6	120	25	✓	
BS04PCM060140	M6	140	25	✓	



?? = 04: 304 Stainless  
16: 316 Stainless



# Hex Set Screw

## METRIC HEX SET SCREW DIN 933

Part	Size	Length (mm)	Pack	Stock	
				304/A2	316/A4
BS??PCM080012	M8	12	100	✓	✓
BS??PCM080016	M8	16	100	✓	✓
BS??PCM080020	M8	20	100	✓	✓
BS??PCM080025	M8	25	100	✓	✓
BS??PCM080030	M8	30	100	✓	✓
BS??PCM080035	M8	35	100	✓	✓
BS??PCM080040	M8	40	100	✓	✓
BS??PCM080045	M8	45	100	✓	✓
BS??PCM080050	M8	50	100	✓	✓
BS??PCM080055	M8	55	50	✓	✓
BS??PCM080060	M8	60	50	✓	✓
BS??PCM080065	M8	65	50	✓	✓
BS??PCM080070	M8	70	50	✓	✓
BS??PCM080075	M8	75	50	✓	✓
BS??PCM080080	M8	80	50	✓	✓
BS??PCM080090	M8	90	50	✓	✓
BS??PCM080100	M8	100	50	✓	✓
BS??PCM080110	M8	110	25	✓	✓
BS??PCM080120	M8	120	25	✓	✓
BS??PCM080130	M8	130	25	✓	✓
BS??PCM080140	M8	140	25	✓	✓
BS??PCM080150	M8	150	25	✓	✓



# Hex Set Screw



## METRIC HEX SET SCREW DIN 933

Part	Size	Length	Pack	Stock	
		(mm)		304/A2	316/A4
BS??PCM100016	M10	16	100	✓	✓
BS??PCM100020	M10	20	100	✓	✓
BS??PCM100025	M10	25	100	✓	✓
BS??PCM100030	M10	30	100	✓	✓
BS??PCM100035	M10	35	100	✓	✓
BS??PCM100040	M10	40	100	✓	✓
BS??PCM100045	M10	45	100	✓	✓
BS??PCM100050	M10	50	100	✓	✓
BS??PCM100055	M10	55	50	✓	✓
BS??PCM100060	M10	60	50	✓	✓
BS??PCM100065	M10	65	50	✓	✓
BS??PCM100070	M10	70	50	✓	✓
BS??PCM100075	M10	75	50	✓	✓
BS??PCM100080	M10	80	50	✓	✓
BS??PCM100090	M10	90	50	✓	✓
BS??PCM100100	M10	100	50	✓	✓
BS??PCM100110	M10	110	25	✓	✓
BS??PCM100120	M10	120	25	✓	✓
BS??PCM100130	M10	130	25	✓	✓
BS??PCM100140	M10	140	25	✓	✓
BS??PCM100150	M10	150	25	✓	✓



?? = 04: 304 Stainless  
16: 316 Stainless



# Hex Set Screw

## METRIC HEX SET SCREW DIN 933

Part	Size	Length (mm)	Pack	Stock	
				304/A2	316/A4
BS??PCM120020	M12	20	100	✓	✓
BS??PCM120025	M12	25	100	✓	✓
BS??PCM120030	M12	30	100	✓	✓
BS??PCM120035	M12	35	100	✓	✓
BS??PCM120040	M12	40	50	✓	✓
BS??PCM120045	M12	45	50	✓	✓
BS??PCM120050	M12	50	50	✓	✓
BS??PCM120055	M12	55	25	✓	✓
BS??PCM120060	M12	60	25	✓	✓
BS??PCM120065	M12	65	25	✓	✓
BS??PCM120070	M12	70	25	✓	✓
BS??PCM120075	M12	75	25	✓	✓
BS??PCM120080	M12	80	25	✓	✓
BS04PCM120085	M12	85	25	✓	
BS??PCM120090	M12	90	25	✓	✓
BS??PCM120100	M12	100	25	✓	✓
BS??PCM120110	M12	110	25	✓	✓
BS??PCM120120	M12	120	25	✓	✓
BS??PCM120130	M12	130	25	✓	✓
BS??PCM120140	M12	140	25	✓	✓
BS??PCM120150	M12	150	25	✓	✓
BS04PCM140025	M14	25	25	✓	
BS16PCM140030	M14	30	25		✓
BS04PCM140035	M14	35	25	✓	
BS??PCM140040	M14	40	25	✓	✓
BS16PCM140045	M14	45	25		✓
BS16PCM140050	M14	50	25		✓
BS04PCM140055	M14	55	25	✓	
BS??PCM140060	M14	60	25	✓	✓
BS16PCM140065	M14	65	25		✓
BS??PCM140070	M14	70	25	✓	✓
BS16PCM140080	M14	80	25		✓
BS16PCM140090	M14	90	25		✓
BS16PCM140100	M14	100	25		✓

# Hex Set Screw

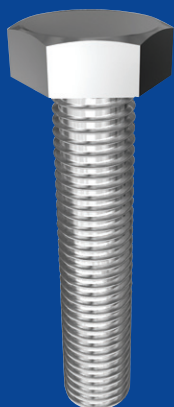


## METRIC HEX SET SCREW DIN 933

Part	Size	Length	Pack	Stock	
		(mm)		304/A2	316/A4
BS??PCM160025	M16	25	25	✓	✓
BS??PCM160030	M16	30	25	✓	✓
BS??PCM160035	M16	35	25	✓	✓
BS??PCM160040	M16	40	25	✓	✓
BS??PCM160045	M16	45	25	✓	✓
BS??PCM160050	M16	50	25	✓	✓
BS??PCM160055	M16	55	25	✓	✓
BS??PCM160060	M16	60	25	✓	✓
BS??PCM160065	M16	65	25	✓	✓
BS??PCM160070	M16	70	25	✓	✓
BS??PCM160075	M16	75	25	✓	✓
BS??PCM160080	M16	80	25	✓	✓
BS??PCM160090	M16	90	25	✓	✓
BS??PCM160100	M16	100	25	✓	✓
BS??PCM160110	M16	110	25	✓	✓
BS??PCM160120	M16	120	25	✓	✓
BS??PCM160130	M16	130	20	✓	✓
BS??PCM160140	M16	140	20	✓	✓
BS??PCM160150	M16	150	20	✓	✓
BS04PCM180040	M18	40	25	✓	
BS04PCM180050	M18	50	25	✓	
BS04PCM180060	M18	60	25	✓	
BS04PCM180070	M18	70	25	✓	
BS04PCM180080	M18	80	25	✓	
BS04PCM180090	M18	90	25	✓	
BS04PCM180100	M18	100	25	✓	



?? = 04: 304 Stainless  
16: 316 Stainless



# Hex Set Screw

## METRIC HEX SET SCREW DIN 933

Part	Size	Length (mm)	Pack	Stock	
				304/A2	316/A4
BS??PCM200040	M20	40	25	✓	✓
BS??PCM200045	M20	45	25	✓	✓
BS??PCM200050	M20	50	25	✓	✓
BS??PCM200055	M20	55	25	✓	✓
BS??PCM200060	M20	60	25	✓	✓
BS??PCM200065	M20	65	25	✓	✓
BS??PCM200070	M20	70	25	✓	✓
BS??PCM200075	M20	75	20	✓	✓
BS??PCM200080	M20	80	20	✓	✓
BS??PCM200090	M20	90	10	✓	✓
BS??PCM200100	M20	100	10	✓	✓
BS??PCM200110	M20	110	10	✓	✓
BS??PCM200120	M20	120	10	✓	✓
BS??PCM200130	M20	130	10	✓	✓
BS??PCM200140	M20	140	10	✓	✓
BS??PCM200150	M20	150	10	✓	✓
BS16PCM220050	M22	50	10		✓
BS16PCM220060	M22	60	10		✓
BS16PCM220070	M22	70	10		✓
BS16PCM220075	M22	75	10		✓
BS16PCM220080	M22	80	10		✓
BS??PCM240050	M24	50	10	✓	✓
BS04PCM240055	M24	55	10	✓	
BS??PCM240060	M24	60	10	✓	✓
BS??PCM240065	M24	65	10	✓	✓
BS??PCM240070	M24	70	10	✓	✓
BS??PCM240080	M24	80	10	✓	✓
BS??PCM240090	M24	90	10	✓	✓
BS??PCM240100	M24	100	10	✓	✓
BS16PCM270060	M27	60	5		✓
BS16PCM270080	M27	80	5		✓
BS16PCM300090	M30	90	5		✓

# Hex Set Screw



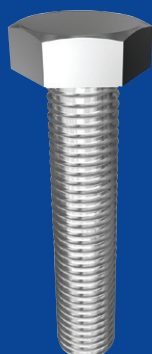
## UNC HEX SET SCREW ANSI B18.2.1

Part	Size	Length (inch)	Pack	Stock	
				304/A2	316/A4
BS04P08320050	8-32"	1/2"	100	✓	
BS04P08320100	8-32"	1"	100	✓	
BS04P08320150	8-32"	1 1/2"	100	✓	
BS04PC0250037	1/4"	3/8"	100	✓	
BS??PC0250050	1/4"	1/2"	100	✓	✓
BS??PC0250062	1/4"	5/8"	100	✓	✓
BS??PC0250075	1/4"	3/4"	100	✓	✓
BS04PC0250087	1/4"	7/8"	100	✓	
BS??PC0250100	1/4"	1"	100	✓	✓
BS??PC0250125	1/4"	1 1/4"	100	✓	✓
BS??PC0250150	1/4"	1 1/2"	100	✓	✓
BS??PC0250175	1/4"	1 3/4"	100	✓	✓
BS??PC0250200	1/4"	2"	100	✓	✓
BS??PC0250250	1/4"	2 1/2"	50	✓	✓
BS??PC0250300	1/4"	3"	50	✓	✓
BS04PC0250400	1/4"	4"	50	✓	
BS??PC0310050	5/16"	1/2"	100	✓	✓
BS??PC0310062	5/16"	5/8"	100	✓	✓
BS??PC0310075	5/16"	3/4"	100	✓	✓
BS??PC0310100	5/16"	1"	100	✓	✓
BS??PC0310125	5/16"	1 1/4"	100	✓	✓
BS??PC0310150	5/16"	1 1/2"	100	✓	✓
BS04PC0310175	5/16"	1 3/4"	100	✓	
BS??PC0310200	5/16"	2"	100	✓	✓
BS04PC0310225	5/16"	2 1/4"	50	✓	
BS??PC0310250	5/16"	2 1/2"	50	✓	✓
BS??PC0310300	5/16"	3"	50	✓	✓
BS??PC0310400	5/16"	4"	50	✓	✓
BS??PC0370050	3/8"	1/2"	100	✓	✓
BS04PC0370062	3/8"	5/8"	100	✓	
BS??PC0370075	3/8"	3/4"	100	✓	✓
BS??PC0370100	3/8"	1"	100	✓	✓
BS??PC0370125	3/8"	1 1/4"	100	✓	✓
BS??PC0370150	3/8"	1 1/2"	100	✓	✓
BS??PC0370175	3/8"	1 3/4"	100	✓	✓
BS??PC0370200	3/8"	2"	100	✓	✓
BS04PC0370225	3/8"	2 1/4"	50	✓	
BS??PC0370250	3/8"	2 1/2"	50	✓	✓
BS??PC0370300	3/8"	3"	50	✓	✓
BS04PC0370350	3/8"	3 1/2"	50	✓	
BS??PC0370400	3/8"	4"	50	✓	✓



?? = 04: 304 Stainless  
16: 316 Stainless





# Hex Set Screw

## UNC HEX SET SCREW ANSI B18.2.1

Part	Size	Length (inch)	Pack	Stock	
				304/A2	316/A4
BS16PC0430100	7/16"	1"	100		✓
BS16PC0430125	7/16"	1 1/4"	100		✓
BS16PC0430150	7/16"	1 1/2"	50		✓
BS16PC0500075	1/2"	3/4"	100		✓
BS??PC0500100	1/2"	1"	100	✓	✓
BS??PC0500125	1/2"	1 1/4"	100	✓	✓
BS??PC0500150	1/2"	1 1/2"	50	✓	✓
BS??PC0500175	1/2"	1 3/4"	50	✓	✓
BS??PC0500200	1/2"	2"	50	✓	✓
BS??PC0500250	1/2"	2 1/2"	25	✓	✓
BS??PC0500300	1/2"	3"	25	✓	✓
BS04PC0500350	1/2"	3 1/2"	25	✓	
BS??PC0500400	1/2"	4"	25	✓	✓
BS??PC0620100	5/8"	1"	25	✓	✓
BS??PC0620125	5/8"	1 1/4"	25	✓	✓
BS??PC0620150	5/8"	1 1/2"	25	✓	✓
BS??PC0620175	5/8"	1 3/4"	25	✓	✓
BS??PC0620200	5/8"	2"	25	✓	✓
BS04PC0620225	5/8"	2 1/4"	25	✓	
BS??PC0620250	5/8"	2 1/2"	25	✓	✓
BS??PC0620300	5/8"	3"	25	✓	✓
BS??PC0620350	5/8"	3 1/2"	25	✓	✓
BS??PC0620400	5/8"	4"	25	✓	✓
BS??PC0750125	3/4"	1 1/4"	25	✓	✓
BS??PC0750150	3/4"	1 1/2"	25	✓	✓
BS??PC0750175	3/4"	1 3/4"	25	✓	✓
BS??PC0750200	3/4"	2"	25	✓	✓
BS??PC0750225	3/4"	2 1/4"	25	✓	✓
BS??PC0750250	3/4"	2 1/2"	25	✓	✓
BS??PC0750300	3/4"	3"	20	✓	✓
BS??PC0750350	3/4"	3 1/2"	10	✓	✓
BS??PC0750400	3/4"	4"	10	✓	✓
BS16PC0870200	7/8"	2"	10		✓
BS16PC0870250	7/8"	2 1/2"	10		✓
BS16PC0870300	7/8"	3"	10		✓
BS16PC1000200	1"	2"	10		✓
BS16PC1000250	1"	2 1/2"	10		✓
BS16PC1000300	1"	3"	10		✓
BS16PC1000350	1"	3 1/2"	10		✓

# Hex Set Screw



## UNF HEX SET SCREW ANSI B18.2.1

Part	Size	Length (inch)	Pack	Stock 304/A2
BS04PF010320050	10-32"	1/2"	50	✓
BS04PF010320062	10-32"	5/8"	50	✓
BS04PF010320075	10-32"	3/4"	50	✓
BS04PF010320100	10-32"	1"	50	✓
BS04PF010320125	10-32"	1 1/4"	50	✓
BS04PF010320150	10-32"	1 1/2"	50	✓
BS04PF010320200	10-32"	2"	50	✓
BS04PF0250050	1/4"	1/2"	50	✓
BS04PF0250062	1/4"	5/8"	50	✓
BS04PF0250075	1/4"	3/4"	50	✓
BS04PF0250100	1/4"	1"	50	✓
BS04PF0310062	5/16"	5/8"	50	✓
BS04PF0310075	5/16"	3/4"	50	✓
BS04PF0310100	5/16"	1"	50	✓
BS04PF0310125	5/16"	1 1/4"	50	✓
BS04PF0370075	3/8"	3/4"	50	✓
BS04PF0370100	3/8"	1"	50	✓
BS04PF0370125	3/8"	1 1/4"	50	✓
BS04PF0430100	7/16"	1"	50	✓
BS04PF0430125	7/16"	1 1/4"	50	✓
BS04PF0430150	7/16"	1 1/2"	50	✓
BS04PF0500100	1/2"	1"	25	✓
BS04PF0500125	1/2"	1 1/4"	25	✓
BS04PF0500150	1/2"	1 1/2"	25	✓
BS04PF0620125	5/8"	1 1/4"	25	✓
BS04PF0620150	5/8"	1 1/2"	25	✓
BS04PF0620200	5/8"	2"	25	✓





# Hex Set Screw

## BSW HEX SET SCREW BS1083

Part	Size	Length (inch)	Pack	Stock	
				304/A2	316/A4
BS04PW0180037	3/16"	3/8"	100	✓	
BS??PW0180050	3/16"	1/2"	100	✓	✓
BS??PW0180062	3/16"	5/8"	100	✓	✓
BS??PW0180075	3/16"	3/4"	100	✓	✓
BS??PW0180100	3/16"	1"	100	✓	✓
BS??PW0180125	3/16"	1 1/4"	100	✓	✓
BS??PW0180150	3/16"	1 1/2"	100	✓	✓
BS??PW0180200	3/16"	2"	100	✓	✓
BS16PW0180250	3/16"	2 1/2"	100		✓
BS16PW0180300	3/16"	3"	100		✓
BS16PW0500075	1/2"	3/4"	100		✓
BS16PW0500100	1/2"	1"	100		✓
BS16PW0500125	1/2"	1 1/4"	100		✓
BS16PW0500150	1/2"	1 1/2"	50		✓
BS16PW0500175	1/2"	1 3/4"	50		✓
BS16PW0500200	1/2"	2"	50		✓
BS16PW0500250	1/2"	2 1/2"	25		✓
BS16PW0500300	1/2"	3"	25		✓
BS16PW0500350	1/2"	3 1/2"	25		✓

# Hex Coach Screw



## METRIC HEX COACH SCREW DIN 571

Part	Size	Length (mm)	Pack	Stock
				316/A4
BH16PLM060030	M6	30	100	✓
BH16PLM060040	M6	40	100	✓
BH16PLM060050	M6	50	100	✓
BH16PLM060065	M6	65	50	✓
BH16PLM060075	M6	75	50	✓
BH16PLM060100	M6	100	50	✓
BH16PLM080030	M8	30	50	✓
BH16PLM080040	M8	40	50	✓
BH16PLM080050	M8	50	50	✓
BH16PLM080065	M8	65	50	✓
BH16PLM080075	M8	75	50	✓
BH16PLM080100	M8	100	50	✓
BH16PLM100040	M10	40	50	✓
BH16PLM100050	M10	50	50	✓
BH16PLM100065	M10	65	25	✓
BH16PLM100075	M10	75	25	✓
BH16PLM100100	M10	100	25	✓
BH16PLM100120	M10	120	25	✓
BH16PLM100130	M10	130	25	✓
BH16PLM100150	M10	150	25	✓
BH16PLM100180	M10	180	25	✓
BH16PLM120040	M12	40	25	✓
BH16PLM120050	M12	50	25	✓
BH16PLM120065	M12	65	25	✓
BH16PLM120075	M12	75	25	✓
BH16PLM120100	M12	100	25	✓
BH16PLM120120	M12	120	25	✓
BH16PLM120130	M12	130	25	✓
BH16PLM120150	M12	150	25	✓
BH16PLM120180	M12	180	25	✓



?? = 04: 304 Stainless  
16: 316 Stainless



# Cup Head Bolt

## METRIC CUP HEAD SQUARE NECK BOLT DIN 603

Part	Size	Length (mm)	Pack	Stock 316/A4
BC16PCM060025	M6	25	100	✓
BC16PCM060030	M6	30	100	✓
BC16PCM060040	M6	40	100	✓
BC16PCM060050	M6	50	100	✓
BC16PCM060060	M6	60	50	✓
BC16PCM060070	M6	70	50	✓
BC16PCM060080	M6	80	50	✓
BC16PCM080030	M8	30	50	✓
BC16PCM080040	M8	40	50	✓
BC16PCM080050	M8	50	50	✓
BC16PCM080060	M8	60	50	✓
BC16PCM080080	M8	80	50	✓
BC16PCM080100	M8	100	50	✓
BC16PCM100040	M10	40	50	✓
BC16PCM100050	M10	50	50	✓
BC16PCM100060	M10	60	25	✓
BC16PCM100070	M10	70	25	✓
BC16PCM100080	M10	80	25	✓
BC16PCM100100	M10	100	25	✓
BC16PCM100120	M10	120	25	✓
BC16PCM100130	M10	130	25	✓
BC16PCM120040	M12	40	25	✓
BC16PCM120050	M12	50	25	✓
BC16PCM120060	M12	60	25	✓
BC16PCM120070	M12	70	25	✓
BC16PCM120080	M12	80	25	✓
BC16PCM120100	M12	100	25	✓
BC16PCM120120	M12	120	25	✓
BC16PCM120130	M12	130	25	✓
BC16PCM160070	M16	70	25	✓
BC16PCM160100	M16	100	25	✓
BC16PCM160120	M16	120	25	✓



# Cup Head Bolt

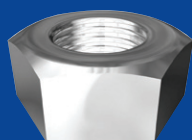


## UNC CUP HEAD SQUARE NECK BOLT ANSI B18.5

Part	Size	Length (inch)	Pack	Stock 304/A2
BC04PC0250075	1/4"	3/4"	100	✓
BC04PC0250100	1/4"	1"	100	✓
BC04PC0250125	1/4"	1 1/4"	100	✓
BC04PC0250150	1/4"	1 1/2"	100	✓
BC04PC0250200	1/4"	2"	100	✓
BC04PC0250250	1/4"	2 1/2"	50	✓
BC04PC0250300	1/4"	3"	50	✓
BC04PC0250400	1/4"	4"	50	✓
BC04PC0250500	1/4"	5"	25	✓
BC04PC0250600	1/4"	6"	25	✓
BC04PC0310100	5/16"	1"	100	✓
BC04PC0310125	5/16"	1 1/4"	100	✓
BC04PC0310150	5/16"	1 1/2"	100	✓
BC04PC0310200	5/16"	2"	100	✓
BC04PC0310250	5/16"	2 1/2"	50	✓
BC04PC0310300	5/16"	3"	50	✓
BC04PC0310400	5/16"	4"	50	✓
BC04PC0310500	5/16"	5"	25	✓
BC04PC0310600	5/16"	6"	25	✓
BC04PC0370100	3/8"	1"	100	✓
BC04PC0370125	3/8"	1 1/4"	100	✓
BC04PC0370150	3/8"	1 1/2"	100	✓
BC04PC0370200	3/8"	2"	100	✓
BC04PC0370250	3/8"	2 1/2"	50	✓
BC04PC0370300	3/8"	3"	50	✓
BC04PC0370350	3/8"	3 1/2"	50	✓
BC04PC0370400	3/8"	4"	50	✓
BC04PC0370500	3/8"	5"	25	✓
BC04PC0370600	3/8"	6"	25	✓
BC04PC0500125	1/2"	1 1/4"	25	✓
BC04PC0500200	1/2"	2"	25	✓
BC04PC0500250	1/2"	2 1/2"	25	✓
BC04PC0500300	1/2"	3"	25	✓
BC04PC0500400	1/2"	4"	25	✓
BC04PC0500500	1/2"	5"	25	✓
BC04PC0500600	1/2"	6"	25	✓



?? = 04: 304 Stainless  
16: 316 Stainless



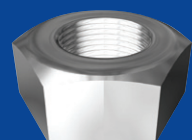
# Hex Nut

## METRIC HEX NUT DIN 934

Part	Size	Pack	Stock	
			304/A2	316/A4
NH??PCM02	M2	200	✓	✓
NH??PCM025	M2.5	200	✓	✓
NH??PCM03	M3	200	✓	✓
NH??PCM04	M4	200	✓	✓
NH??PCM05	M5	200	✓	✓
NH??PCM06	M6	100	✓	✓
NH??PCM08	M8	100	✓	✓
NH??PCM10	M10	100	✓	✓
NH??PCM12	M12	100	✓	✓
NH??PCM14	M14	50	✓	✓
NH??PCM16	M16	50	✓	✓
NH16PCM18	M18	50		✓
NH??PCM20	M20	50	✓	✓
NH16PCM22	M22	25		✓
NH??PCM24	M24	25	✓	✓
NH16PCM27	M27	25		✓
NH??PCM30	M30	10	✓	✓
NH16PCM33	M33	10		✓
NH16PCM36	M36	5		✓
NH16PCM39	M39	5		✓
NH16PCM42	M42	5		✓
NH16PCM48	M48	5		✓
NH16PCM56	M56	1		✓
NH16PCM64	M64	1		✓

## METRIC FINE PITCH HEX NUT DIN 934

Part	Size	Pitch	Pack	Stock	
				304/A2	
NH04PFM10	M10	1.25	100	✓	
NH04PFM12	M12	1.25	100	✓	
NH04PFM12-150	M12	1.50	100	✓	
NH04PFM16	M16	1.50	50	✓	



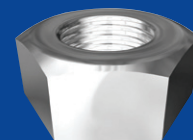
# Hex Nut



## UNC HEX NUT

ANSI B18.6.3 up to 12-24". ANSI B18.2.2 1/4" and above.

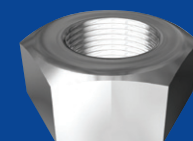
Part	Size	Pitch	Pack	Stock	
				304/A2	316/A4
NH04P0256	2-56"	56	200	✓	
NH04P0440	4-40"	40	200	✓	
NH04P0540	5-40"	40	200	✓	
NH04P0632	6-32"	32	200	✓	
NH??P0832	8-32"	32	200	✓	✓
NH??P1024	10-24"	24	200	✓	✓
NH04P1224	12-24"	24	100	✓	
NH??PC025	1/4"	20	100	✓	✓
NH??PC031	5/16"	18	100	✓	✓
NH??PC037	3/8"	16	100	✓	✓
NH16PC043	7/16"	14	100		✓
NH??PC050	1/2"	13	100	✓	✓
NH16PC056	9/16"	12	50		✓
NH??PC062	5/8"	11	50	✓	✓
NH??PC075	3/4"	10	50	✓	✓
NH??PC087	7/8"	9	25	✓	✓
NH??PC100	1"	8	25	✓	✓
NH16PC112	1 1/8"	7	20		✓
NH16PC125	1 1/4"	7	10		✓



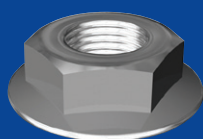
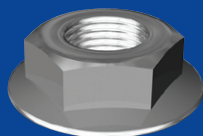
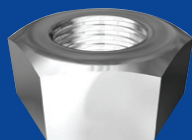
## UNF HEX NUT

ANSI B18.6.3 up to 10-32". ANSI B18.2.2 1/4" and above.

Part	Size	Pitch	Pack	Stock	
				304/A2	316/A4
NH??PF01032	10-32"	32	200	✓	✓
NH??PF025	1/4"	28	100	✓	✓
NH??PF031	5/16"	24	100	✓	✓
NH??PF037	3/8"	24	100	✓	✓
NH16PF043	7/16"	20	50		✓
NH??PF050	1/2"	20	50	✓	✓
NH16PF062	5/8"	18	25		✓
NH16PF075	3/4"	16	25		✓
NH16PF087	7/8"	14	25		✓
NH16PF100	1"	12	25		✓



?? = 04: 304 Stainless  
16: 316 Stainless



# Hex Coupler / Flange Nut

## BSW HEX NUT

BS450 up to 3/16". BS1083 1/4" and above.

Part	Size	Pack	Stock	
			304/A2	316/A4
NH04PW012	1/8"	100	✓	
NH16PW018	3/16"	100		✓
NH??PW050	1/2"	100	✓	✓

## METRIC HEX COUPLER

HOBSON STANDARD

Part	Size	Length (mm)	A/F (mm)	Pack	Stock 316/A4
AXHC16PCM06	M6	25	10	100	✓
AXHC16PCM08	M8	25	13	100	✓
AXHC16PCM10	M10	40	17	100	✓
AXHC16PCM12	M12	40	19	100	✓
AXHC16PCM16	M16	50	24	50	✓
AXHC16PCM20	M20	50	30	25	✓
AXHC16PCM24	M24	50	36	20	✓

## METRIC SERRATED FLANGE NUT

DIN 6923

Part	Size	Pack	Stock	
			304/A2	
NF04PCM05	M5	100	✓	
NF04PCM06	M6	100	✓	
NF04PCM08	M8	100	✓	
NF04PCM10	M10	100	✓	
NF04PCM12	M12	100	✓	

## UNC SERRATED FLANGE NUT

IFI D-21

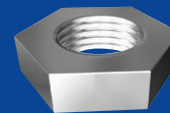
Part	Size	Pack	Stock	
			316/A4	
NF16PC037	3/8"	100	✓	

# Hex Lock Nut



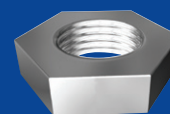
## METRIC HEX LOCK NUT DIN 439

Part	Size	Pack	Stock	
			304/A2	316/A4
NL04PCM03	M3	200	✓	
NL??PCM04	M4	100	✓	✓
NL??PCM05	M5	100	✓	✓
NL??PCM06	M6	100	✓	✓
NL??PCM08	M8	100	✓	✓
NL??PCM10	M10	100	✓	✓
NL??PCM12	M12	50	✓	✓
NL16PCM14	M14	50		✓
NL??PCM16	M16	50	✓	✓
NL??PCM20	M20	25	✓	✓
NL16PCM24	M24	25		✓



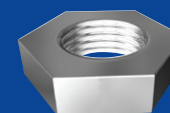
## UNC HEX LOCK NUT ANSI B18.2.2

Part	Size	Pack	Stock	
			304/A2	316/A4
NL16PC025	1/4"	100		✓
NL??PC031	5/16"	100	✓	✓
NL??PC037	3/8"	100	✓	✓
NL??PC050	1/2"	50	✓	✓
NL16PC062	5/8"	50		✓
NL16PC075	3/4"	50		✓
NL16PC087	7/8"	25		✓
NL16PC100	1"	25		✓

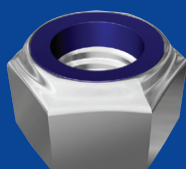
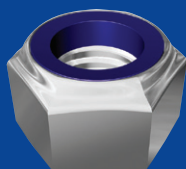


## UNF HEX LOCK NUT ANSI B18.2.2

Part	Size	Pack	Stock	
			316/A4	
NL16PF025	1/4"	100	✓	
NL16PF031	5/16"	100	✓	
NL16PF037	3/8"	100	✓	
NL16PF050	1/2"	50	✓	
NL16PF062	5/8"	50	✓	
NL16PF075	3/4"	50	✓	
NL16PF100	1"	25	✓	



?? = 04: 304 Stainless  
16: 316 Stainless



# Hex Nylon Insert Lock Nut

## METRIC NYLON INSERT LOCK NUT DIN 985

Part	Size	Pack	Stock	
			304/A2	316/A4
NN04PCM025	M2.5	100	✓	
NN??PCM03	M3	100	✓	✓
NN??PCM04	M4	100	✓	✓
NN??PCM05	M5	100	✓	✓
NN??PCM06	M6	100	✓	✓
NN??PCM08	M8	100	✓	✓
NN??PCM10	M10	100	✓	✓
NN??PCM12	M12	100	✓	✓
NN16PCM14	M14	50		✓
NN??PCM16	M16	50	✓	✓
NN16PCM18	M18	25		✓
NN??PCM20	M20	25	✓	✓
NN16PCM24	M24	25		✓
NN16PCM27	M27	20		✓
NN16PCM30	M30	10		✓
NN16PCM36	M36	5		✓

## UNC NYLON INSERT LOCK NUT

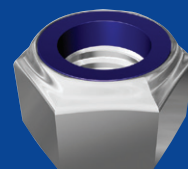
Part	Size	Pack	Stock	
			304/A2	316/A4
NN04P0440	4-40"	100	✓	
NN04P0540	5-40"	100	✓	
NN04P0632	6-32"	100	✓	
NN04P0832	8-32"	100	✓	
NN??P1024	10-24"	100	✓	✓
NN??PC025	1/4"	100	✓	✓
NN??PC031	5/16"	100	✓	✓
NN??PC037	3/8"	100	✓	✓
NN16PC043	7/16"	100		✓
NN??PC050	1/2"	100	✓	✓
NN??PC062	5/8"	50	✓	✓
NN??PC075	3/4"	25	✓	✓
NN16PC087	7/8"	25		✓
NN??PC100	1"	25	✓	✓

# Hex Nylon Insert Lock Nut



## UNF NYLON INSERT LOCK NUT

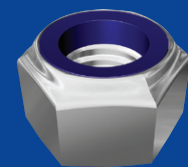
Part	Size	Pack	Stock	
			304/A2	316/A4
NN??PF025	1/4"	100	✓	✓
NN??PF031	5/16"	100	✓	✓
NN??PF037	3/8"	100	✓	✓
NN16PF043	7/16"	50		✓
NN16PF050	1/2"	50		✓
NN16PF062	5/8"	50		✓
NN16PF075	3/4"	25		✓
NN16PF100	1"	25		✓



## BSW NYLON INSERT LOCK NUT

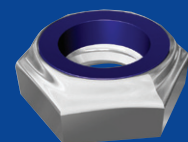
SF16

Part	Size	Pack	Stock	
			304/A2	
NN04PW050	1/2"	100	✓	970.00



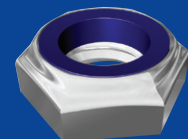
## UNC NYLON INSERT LOCK NUT - THIN TYPE

Part	Size	Pack	Stock	
			304/A2	
NN04TC025	1/4"	100	✓	
NN04TC031	5/16"	100	✓	
NN04TC037	3/8"	100	✓	



## UNF NYLON INSERT LOCK NUT - THIN TYPE

Part	Size	Pack	Stock	
			304/A2	
NN04TF037	3/8"	100	✓	
NN04TF050	1/2"	100	✓	



?? = 04: 304 Stainless  
16: 316 Stainless



# Hex Dome Nut

## METRIC HEX DOME NUT DIN 1587

Part	Size	Pack	Stock	
			304/A2	316/A4
ND04PCM03	M3	100	✓	
ND??PCM04	M4	100	✓	✓
ND??PCM05	M5	100	✓	✓
ND??PCM06	M6	100	✓	✓
ND??PCM08	M8	100	✓	✓
ND??PCM10	M10	100	✓	✓
ND??PCM12	M12	50	✓	✓
ND??PCM16	M16	50	✓	✓
ND16PCM20	M20	25		✓
ND16PCM24	M24	25		✓

## UNC HEX DOME NUT

Part	Size	Pack	Stock	
			304/A2	
ND04P0832	8-32"	100	✓	
ND04P1024	10-24"	100	✓	
ND04PC025	1/4"	100	✓	
ND04PC031	5/16"	100	✓	
ND04PC037	3/8"	100	✓	
ND04PC043	7/16"	25	✓	
ND04PC050	1/2"	25	✓	
ND04PC062	5/8"	25	✓	

## UNF HEX DOME NUT

Part	Size	Pack	Stock	
			304/A2	
ND04PF01032	10-32"	100	✓	
ND04PF025	1/4"	100	✓	
ND04PF031	5/16"	100	✓	
ND04PF037	3/8"	100	✓	
ND04PF050	1/2"	50	✓	



# Hex Dome Nut

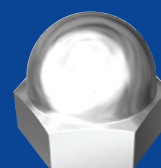
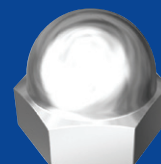


## METRIC HEX DOME NUT 2PC WELDED

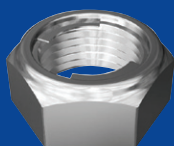
Part	Size	Pack	Stock
304/A2			
ND04WCM04	M4	100	✓
ND04WCM05	M5	100	✓
ND04WCM06	M6	100	✓
ND04WCM08	M8	100	✓
ND04WCM10	M10	100	✓
ND04WCM12	M12	50	✓
ND04WCM16	M16	50	✓
ND04WCM20	M20	25	✓

## BSW HEX DOME NUT 2PC WELDED

Part	Size	Pack	Stock
304/A2			
ND04WW050	1/2"	50	✓

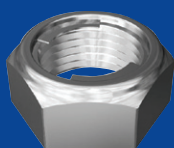


# Hex Hobloch Nut



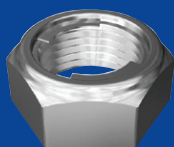
## METRIC HEX HOBLOCH NUT HOBSON - ALL STAINLESS SELF LOCKING

Part	Size	Pack	Stock
304/A2			
NN04HCM04	M4	100	✓
NN04HCM05	M5	100	✓
NN04HCM06	M6	100	✓
NN04HCM08	M8	100	✓
NN04HCM10	M10	100	✓
NN04HCM12	M12	50	✓
NN04HCM16	M16	25	✓
NN04HCM20	M20	25	✓



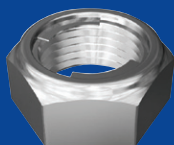
## UNC HEX HOBLOCH NUT HOBSON - ALL STAINLESS SELF LOCKING

Part	Size	Pack	Stock
304/A2			
NN04H1024	10-24"	100	✓
NN04HC025	1/4"	100	✓
NN04HC037	3/8"	100	✓



## UNF HEX HOBLOCH NUT HOBSON - ALL STAINLESS SELF LOCKING

Part	Size	Pack	Stock
304/A2			
NN04HF025	1/4"	100	✓



## BSW HEX HOBLOCH NUT HOBSON - ALL STAINLESS SELF LOCKING

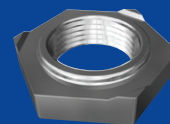
Part	Size	Pack	Stock
304/A2			
NN04HW050	1/2"	50	✓

# Hex Weld / Wing Nut



## METRIC HEX WELD NUT DIN 929

Part	Size	Pack	Stock
304/A2			
NH04WCM03	M3	100	✓
NH04WCM04	M4	100	✓
NH04WCM05	M5	100	✓
NH04WCM06	M6	100	✓
NH04WCM08	M8	100	✓



## METRIC WING NUT ANSI B18.17 TYPE A (DIMENSIONS)

Part	Size	Pack	Stock
			304/A2      316/A4
NW??PCM03	M3	100	✓      ✓
NW??PCM04	M4	100	✓      ✓
NW??PCM05	M5	100	✓      ✓
NW??PCM06	M6	100	✓      ✓
NW??PCM08	M8	100	✓      ✓
NW??PCM10	M10	100	✓      ✓
NW??PCM12	M12	50	✓      ✓
NW??PCM16	M16	25	✓      ✓



## UNC WING NUT ANSI B18.17 TYPE A

Part	Size	Pack	Stock
			304/A2      316/A4
NW??P1024	10-24"	100	✓      ✓
NW??PC025	1/4"	100	✓      ✓
NW??PC031	5/16"	100	✓      ✓
NW??PC037	3/8"	100	✓      ✓
NW??PC050	1/2"	50	✓      ✓
NW16PC062	5/8"	25	✓
NW04PC075	3/4"	25	✓

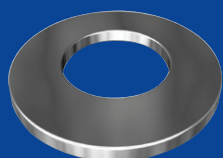
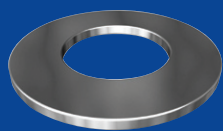


## BSW WING NUT ANSI B18.17 TYPE A (DIMENSIONS)

Part	Size	Pack	Stock
			316/A4
NW16PW050	1/2"	50	✓



?? = 04: 304 Stainless  
16: 316 Stainless



# Round Washer

## METRIC FLAT ROUND WASHER HOBSON STANDARD

Part	Size	OD	Thk	Pack	Stock	
		(mm)	(mm)		304/A2	316/A4
WR04PM03	M3	7.0	0.5	200	✓	
WR??PM04	M4	9.0	0.8	200	✓	✓
WR??PM05	M5	10.0	0.8	200	✓	✓
WR??PM06	M6	12.5	1.2	100	✓	✓
WR??PM08	M8	17.0	1.2	100	✓	✓
WR??PM10	M10	21.0	1.2	100	✓	✓
WR??PM12	M12	24.0	1.5	100	✓	✓
WR??PM14	M14	28.0	1.5	100	✓	✓
WR??PM16	M16	30.0	1.5	100	✓	✓
WR??PM20	M20	37.0	2.0	100	✓	✓
WR??PM22	M22	39.0	2.5	100	✓	✓
WR??PM24	M24	44.0	3.0	50	✓	✓
WR16PM27	M27	50.0	3.0	25		✓
WR??PM30	M30	56.0	3.0	20	✓	✓
WR16PM33	M33	60.0	3.0	20		✓
WR16PM36	M36	66.0	5.0	10		✓
WR16PM39	M39	72.0	6.0	10		✓
WR16PM42	M42	78.0	7.0	10		✓
WR16PM48	M48	92.0	8.0	10		✓

## METRIC FLAT ROUND WASHER DIN 125A

Part	Size	OD	Thk	Pack	Stock	
		(mm)	(mm)		304/A2	316/A4
WR16TM02	M2	5.0	0.3	200		✓
WR16TM025	M2.5	6.0	0.5	200		✓
WR16TM03	M3	7.0	0.5	200		✓
WR16TM04	M4	9.0	0.8	200		✓
WR16TM05	M5	10.0	1.0	200		✓
WR16TM06	M6	12.5	1.6	100		✓
WR??TM08	M8	17.0	1.6	100	✓	✓
WR??TM10	M10	21.0	2.0	100	✓	✓
WR??TM12	M12	24.0	2.5	100	✓	✓
WR??TM16	M16	30.0	3.0	100	✓	✓
WR??TM18	M18	34.0	3.0	100	✓	✓
WR??TM20	M20	37.0	3.0	100	✓	✓
WR16TM24	M24	44.0	4.0	50		✓
WR16PM39	M39	72.0	6.0	10		✓
WR16PM42	M42	78.0	7.0	10		✓
WR16PM48	M48	92.0	8.0	10		✓

?? = 04: 304 Stainless  
16: 316 Stainless

Quality Fasteners Since 1935

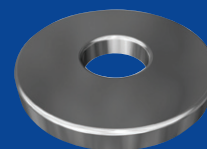
November 2011

# Spring / Square Washer



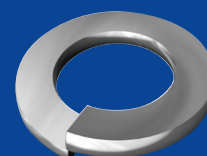
## METRIC FLAT ROUND WASHER - MUDGUARD DIN 9021

Part	Size	OD	Thk	Pack	Stock	
		(mm)	(mm)		304/A2	316/A4
WR??MM05	M5	15.0	1.2	100	✓	✓
WR??MM06	M6	18.0	1.6	100	✓	✓
WR??MM08	M8	24.0	2.0	100	✓	✓
WR04MM10	M10	30.0	2.5	100	✓	
WR??MM12	M12	37.0	3.0	100	✓	✓
WR04MM16	M16	50.0	3.0	50	✓	
WR04MM20	M20	60.0	4.0	50	✓	



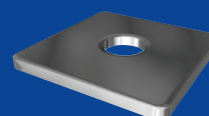
## METRIC ROUND SPRING WASHER DIN 127B

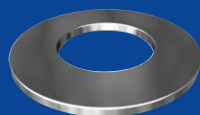
Part	Size	OD	Thk	Width	Pack	Stock	
		(mm)	(mm)	(mm)		304/A2	316/A4
WR??SM03	M3	6.2	0.8	1.3	200	✓	✓
WR??SM04	M4	7.6	0.9	1.5	200	✓	✓
WR??SM05	M5	9.2	1.2	1.8	200	✓	✓
WR??SM06	M6	11.8	1.6	2.5	100	✓	✓
WR??SM08	M8	14.8	2.0	3.0	100	✓	✓
WR??SM10	M10	18.1	2.2	3.5	100	✓	✓
WR??SM12	M12	21.1	2.5	4.0	100	✓	✓
WR16SM14	M14	24.1	3.0	4.5	100		✓
WR??SM16	M16	27.4	3.5	5.0	100	✓	✓
WR??SM20	M20	33.6	4.0	6.0	100	✓	✓
WR16SM24	M24	40.0	5.0	7.0	50		✓
WR16SM30	M30	48.2	6.0	8.0	20		✓



## METRIC SQUARE WASHER HOBSON STANDARD

Part	Size	OD	Thk	Pack	Stock	
		(mm)	(mm)		316/A4	
WS16PM12050030	M12	50	3.0	200	✓	
WS16PM16050050	M16	50	5.0	100	✓	





# Round Washer

## IMPERIAL FLAT ROUND WASHER HOBSON STANDARD

Part	Size	OD	Thk	Pack	Stock	
		(inch)	(gauge)		304/A2	316/A4
WR04P012031	1/8"	5/16"	22	200	✓	
WR04P012037	1/8"	3/8"	20	200	✓	
WR04P015037	5/32"	3/8"	30	200	✓	
WR04P015043	5/32"	7/16"	20	200	✓	
WR??P018043	3/16"	7/16"	20	200	✓	✓
WR??P018050	3/16"	1/2"	20	100	✓	✓
WR??P018075	3/16"	3/4"	18	100	✓	✓
WR??P018087	3/16"	7/8"	18	100	✓	✓
WR??P018100	3/16"	1"	16	100	✓	✓
WR??P018125	3/16"	1 1/4"	16	100	✓	✓
WR??P025050	1/4"	1/2"	20	100	✓	✓
WR??P025056	1/4"	9/16"	18	100	✓	✓
WR??P025062	1/4"	5/8"	18	100	✓	✓
WR??P025075	1/4"	3/4"	18	100	✓	✓
WR16P025087	1/4"	7/8"	18	100		✓
WR??P025100	1/4"	1"	16	100	✓	✓
WR??P025125	1/4"	1 1/4"	16	100	✓	✓
WR??P031062	5/16"	5/8"	18	100	✓	✓
WR??P031075	5/16"	3/4"	18	100	✓	✓
WR??P031100	5/16"	1"	16	100	✓	✓
WR??P031125	5/16"	1 1/4"	16	100	✓	✓
WR??P037075	3/8"	3/4"	18	100	✓	✓
WR16P037087	3/8"	7/8"	18	100		✓
WR??P037100	3/8"	1"	16	100	✓	✓
WR??P037125	3/8"	1 1/4"	16	100	✓	✓
WR??P037150	3/8"	1 1/2"	14	100	✓	✓
WR16P037200	3/8"	2"	3mm	100		✓
WR16P043112	7/16"	1 1/8"	16	100		✓
WR??P050100	1/2"	1"	16	100	✓	✓
WR??P050125	1/2"	1 1/4"	14	100	✓	✓
WR??P050200	1/2"	2"	14	50	✓	✓
WR16P056125	9/16"	1 1/4"	14	100		✓
WR??P062125	5/8"	1 1/4"	16	100	✓	✓
WR??P062150	5/8"	1 1/2"	14	100	✓	✓
WR??P075150	3/4"	1 1/2"	14	100	✓	✓
WR??P075187	3/4"	1 7/8"	12	100	✓	✓
WR??P087162	7/8"	1 5/8"	14	50	✓	✓
WR??P087200	7/8"	2"	10	50	✓	✓

?? = 04: 304 Stainless  
16: 316 Stainless

Quality Fasteners Since 1935

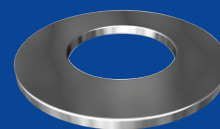
November 2011

# Spring Washer



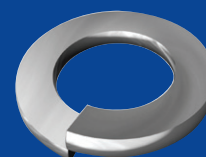
## IMPERIAL FLAT ROUND WASHER HOBSON STANDARD

Part	Size	OD	Thk	Pack	Stock	
		(inch)	(gauge)		304/A2	316/A4
WR04P100187	1"	1 7/8"	12	50	✓	
WR16P100187	1"	1 7/8"	14	50		✓
WR04P100200	1"	2"	10	50	✓	
WR??P100250	1"	2 1/2"	10	25	✓	✓
WR16P112250	1 1/8"	2 1/2"	10	20		✓
WR16P125275	1 1/4"	2 3/4"	10	20		✓
WR16P137300	1 3/8"	3"	10	10		✓
WR16P150325	1 1/2"	3 1/4"	10	10		✓
WR16P200400	2"	4"	8	10		✓



## IMPERIAL ROUND SPRING WASHER ANSI B18.21.1

Part	Size	OD	Thk	Width	Pack	Stock	
		(inch)	(inch)	(inch)		304/A2	316/A4
WR16S012	1/8"	0.250	0.031	0.047	200		✓
WR??S015	5/32"	0.293	0.040	0.055	200	✓	✓
WR??S018	3/16"	0.334	0.047	0.062	200	✓	✓
WR??S025	1/4"	0.489	0.062	0.109	100	✓	✓
WR??S031	5/16"	0.586	0.078	0.125	100	✓	✓
WR??S037	3/8"	0.683	0.094	0.141	100	✓	✓
WR16S043	7/16"	0.779	0.109	0.156	100		✓
WR??S050	1/2"	0.873	0.125	0.171	100	✓	✓
WR??S062	5/8"	1.079	0.156	0.203	100	✓	✓
WR??S075	3/4"	1.271	0.188	0.234	100	✓	✓
WR16S087	7/8"	1.464	0.219	0.266	50		✓
WR16S100	1"	1.661	0.250	0.297	50		✓



## GAUGE CONVERSION - WASHER

gauge no.	inch	mm
8	0.1570"	3.988
9	0.1398"	3.551
10	0.1250"	3.175
12	0.0991"	2.517
14	0.0785"	1.994
16	0.0625"	1.588
18	0.0495"	1.257
20	0.0392"	0.9957
22	0.03125"	0.7938
30	0.0123"	0.3124

?? = 04: 304 Stainless  
16: 316 Stainless

# Cup / Belleville Washer

## CUP WASHER

Part	Size	OD (mm)	ID (mm)	Thk (mm)	Pack	Stock 304/A2
WR04C#06	6G	11.3	4.0	0.4	200	✓
WR04C#08	8G	13.6	4.8	0.4	200	✓
WR04C#10	10G	15.1	5.6	0.4	200	✓
WR04C#12	12G	17.5	6.5	0.4	200	✓
WR04C#14	14G	19.8	7.2	0.4	200	✓

## BELLEVILLE WASHER

Part	Size	OD (mm)	Thk (mm)	Height (mm)	Pack	Stock 304/A2
WR04BM04	M4	8.0	0.40	0.60	100	✓
WR04BM05	M5	10.0	0.50	0.75	100	✓
WR04BM06	M6	12.5	0.70	1.00	100	✓
WR04BM08	M8	16.0	0.90	1.25	100	✓
WR04BM10	M10	20.0	1.10	1.55	100	✓
WR04BM12	M12	25.0	1.50	2.05	100	✓
WR04BM16	M16	31.5	1.75	2.45	100	✓
WR04BM20	M20	40.0	2.25	3.15	100	✓

## METRIC EXTERNAL SERRATED TOOTH LOCK WASHER DIN 6798 TYPE A

Part	Size	OD (mm)	Thk (mm)	Teeth	Pack	Stock 304/A2 316/A4
WL04SEM04	M4	8.0	0.5	11	500	✓
WL16SEM05	M5	10.0	0.6	11	200	✓
WL??SEM06	M6	11.0	0.7	12	200	✓
WL16SEM08	M8	15.0	0.8	14	200	✓
WL??SEM10	M10	18.0	0.9	16	200	✓
WL??SEM12	M12	20.5	1.0	16	100	✓
WL16SEM16	M16	26.0	1.2	18	100	✓

## METRIC INTERNAL SERRATED TOOTH LOCK WASHER DIN 6798 TYPE J

Part	Size	OD (mm)	Thk (mm)	Teeth	Pack	Stock 304/A2
WL04SIM05	M5	10.0	0.6	8	200	✓
WL04SIM06	M6	11.0	0.7	9	200	✓



# Tooth Lock Washer

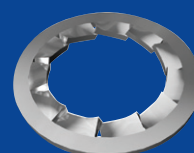


## METRIC EXTERNAL TOOTH LOCK WASHER DIN 6797 TYPE A

Part	Size	OD (mm)	Thk (mm)	Teeth	Pack	Stock 304/A2
WL04TEM025	M2.5	5.5	0.4	6	500	✓
WL04TEM03	M3	6.0	0.4	6	500	✓
WL04TEM04	M4	8.0	0.5	8	500	✓
WL04TEM05	M5	10.0	0.6	8	500	✓
WL04TEM06	M6	11.0	0.7	8	200	✓
WL04TEM08	M8	15.0	0.8	8	200	✓
WL04TEM10	M10	18.0	0.9	9	200	✓
WL04TEM12	M12	20.5	1.0	10	200	✓
WL04TEM16	M16	26.0	1.2	12	100	✓

## METRIC INTERNAL TOOTH LOCK WASHER DIN 6797 TYPE J

Part	Size	OD (mm)	Thk (mm)	Teeth	Pack	Stock 304/A2
WL04TIM03	M3	6.0	0.4	6	500	✓
WL04TIM04	M4	8.0	0.5	8	500	✓
WL04TIM05	M5	10.0	0.6	8	200	✓
WL04TIM06	M6	11.0	0.7	8	200	✓
WL04TIM08	M8	15.0	0.8	8	200	✓
WL04TIM10	M10	18.0	0.9	9	200	✓
WL04TIM12	M12	20.5	1.0	10	100	✓
WL04TIM16	M16	26.0	1.2	12	100	✓
WL04TIM20	M20	33.0	1.4	12	100	✓
WL04TIM22	M22	36.0	1.5	14	100	✓





# Socket Head Cap Screw

## METRIC SOCKET HEAD CAP SCREW DIN 912

Part	Size	Length (mm)	Pack	Stock	
				304/A2	316/A4
SH16PCM0250005	M2.5	5	100		✓
SH16PCM0250006	M2.5	6	100		✓
SH16PCM0250008	M2.5	8	100		✓
SH16PCM0250010	M2.5	10	100		✓
SH16PCM0250012	M2.5	12	100		✓
SH16PCM0250016	M2.5	16	100		✓
SH16PCM0250020	M2.5	20	100		✓
SH??PCM030006	M3	6	100	✓	✓
SH??PCM030008	M3	8	100	✓	✓
SH??PCM030010	M3	10	100	✓	✓
SH??PCM030012	M3	12	100	✓	✓
SH??PCM030016	M3	16	100	✓	✓
SH??PCM030020	M3	20	100	✓	✓
SH??PCM030025	M3	25	100	✓	✓
SH??PCM030030	M3	30	100	✓	✓
SH??PCM030035	M3	35	100	✓	✓
SH??PCM030040	M3	40	100	✓	✓
SH??PCM040006	M4	6	100	✓	✓
SH??PCM040008	M4	8	100	✓	✓
SH??PCM040010	M4	10	100	✓	✓
SH??PCM040012	M4	12	100	✓	✓
SH??PCM040016	M4	16	100	✓	✓
SH??PCM040020	M4	20	100	✓	✓
SH??PCM040025	M4	25	100	✓	✓
SH??PCM040030	M4	30	100	✓	✓
SH??PCM040035	M4	35	100	✓	✓
SH??PCM040040	M4	40	100	✓	✓
SH??PCM040045	M4	45	100	✓	✓
SH??PCM040050	M4	50	100	✓	✓

# Socket Head Cap Screw



## METRIC SOCKET HEAD CAP SCREW DIN 912

Part	Size	Length (mm)	Pack	Stock	
				304/A2	316/A4
SH16PCM050008	M5	8	100		✓
SH??PCM050010	M5	10	100	✓	✓
SH??PCM050012	M5	12	100	✓	✓
SH??PCM050016	M5	16	100	✓	✓
SH??PCM050020	M5	20	100	✓	✓
SH??PCM050025	M5	25	100	✓	✓
SH??PCM050030	M5	30	100	✓	✓
SH??PCM050035	M5	35	100	✓	✓
SH??PCM050040	M5	40	100	✓	✓
SH??PCM050045	M5	45	100	✓	✓
SH??PCM050050	M5	50	100	✓	✓
SH16PCM050060	M5	60	100		✓
SH04PCM060008	M6	8	100	✓	
SH??PCM060010	M6	10	100	✓	✓
SH??PCM060012	M6	12	100	✓	✓
SH??PCM060016	M6	16	100	✓	✓
SH??PCM060020	M6	20	100	✓	✓
SH??PCM060025	M6	25	100	✓	✓
SH??PCM060030	M6	30	100	✓	✓
SH??PCM060035	M6	35	100	✓	✓
SH??PCM060040	M6	40	100	✓	✓
SH??PCM060045	M6	45	100	✓	✓
SH??PCM060050	M6	50	100	✓	✓
SH??PCM060060	M6	60	50	✓	✓
SH16PCM060100	M6	100	50		✓
SH04PCM080012	M8	12	100	✓	
SH??PCM080016	M8	16	100	✓	✓
SH??PCM080020	M8	20	100	✓	✓
SH??PCM080025	M8	25	100	✓	✓
SH??PCM080030	M8	30	100	✓	✓
SH??PCM080035	M8	35	100	✓	✓
SH??PCM080040	M8	40	100	✓	✓
SH??PCM080045	M8	45	100	✓	✓
SH??PCM080050	M8	50	100	✓	✓
SH04PCM080055	M8	55	50	✓	
SH??PCM080060	M8	60	50	✓	✓
SH??PCM080070	M8	70	50	✓	✓
SH16PCM080080	M8	80	50		✓
SH16PCM080090	M8	90	50		✓
SH??PCM080100	M8	100	50	✓	✓



?? = 04: 304 Stainless  
16: 316 Stainless



# Socket Head Cap Screw

## METRIC SOCKET HEAD CAP SCREW DIN 912

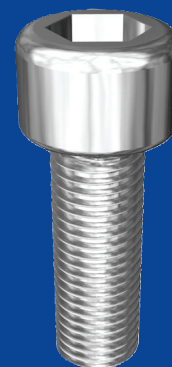
Part	Size	Length (mm)	Pack	Stock	
				304/A2	316/A4
SH??PCM100016	M10	16	100	✓	✓
SH??PCM100020	M10	20	100	✓	✓
SH??PCM100025	M10	25	100	✓	✓
SH??PCM100030	M10	30	100	✓	✓
SH??PCM100035	M10	35	100	✓	✓
SH??PCM100040	M10	40	100	✓	✓
SH??PCM100045	M10	45	100	✓	✓
SH??PCM100050	M10	50	100	✓	✓
SH04PCM100055	M10	55	50	✓	
SH??PCM100060	M10	60	50	✓	✓
SH??PCM100070	M10	70	50	✓	✓
SH??PCM100080	M10	80	50	✓	✓
SH??PCM100090	M10	90	50	✓	✓
SH??PCM100100	M10	100	50	✓	✓
SH??PCM120020	M12	20	50	✓	✓
SH??PCM120025	M12	25	50	✓	✓
SH??PCM120030	M12	30	50	✓	✓
SH??PCM120035	M12	35	50	✓	✓
SH??PCM120040	M12	40	50	✓	✓
SH??PCM120045	M12	45	50	✓	✓
SH??PCM120050	M12	50	50	✓	✓
SH??PCM120060	M12	60	25	✓	✓
SH??PCM120070	M12	70	25	✓	✓
SH??PCM120080	M12	80	25	✓	✓
SH??PCM120090	M12	90	25	✓	✓
SH16PCM120100	M12	100	25		✓

# Socket Head Cap Screw



## METRIC SOCKET HEAD CAP SCREW DIN 912

Part	Size	Length (mm)	Pack	Stock	
				304/A2	316/A4
SH16PCM140040	M14	40	25		✓
SH16PCM140050	M14	50	25		✓
SH??PCM160025	M16	25	25	✓	✓
SH??PCM160030	M16	30	25	✓	✓
SH04PCM160035	M16	35	25	✓	
SH??PCM160040	M16	40	25	✓	✓
SH??PCM160045	M16	45	25	✓	✓
SH??PCM160050	M16	50	25	✓	✓
SH16PCM160060	M16	60	25		✓
SH16PCM160070	M16	70	25		✓
SH16PCM160080	M16	80	25		✓
SH16PCM160090	M16	90	25		✓
SH16PCM160100	M16	100	25		✓
SH16PCM200040	M20	40	10		✓
SH16PCM200050	M20	50	10		✓
SH16PCM200060	M20	60	10		✓
SH16PCM200070	M20	70	10		✓
SH16PCM200080	M20	80	10		✓
SH16PCM200090	M20	90	10		✓
SH16PCM200100	M20	100	10		✓
SH16PCM240050	M24	50	10		✓
SH16PCM240080	M24	80	10		✓
SH16PCM240100	M24	100	10		✓



?? = 04: 304 Stainless  
16: 316 Stainless



# Socket Head Cap Screw

## UNC SOCKET HEAD CAP SCREW ANSI B18.3 (1960 SERIES)

Part	Size	Length (inch)	Pack	Stock 304/A2
SH04P02560018	2-56"	3/16"	100	✓
SH04P02560025	2-56"	1/4"	100	✓
SH04P02560037	2-56"	3/8"	100	✓
SH04P04400025	4-40"	1/4"	100	✓
SH04P04400031	4-40"	5/16"	100	✓
SH04P04400037	4-40"	3/8"	100	✓
SH04P04400050	4-40"	1/2"	100	✓
SH04P04400062	4-40"	5/8"	100	✓
SH04P04400075	4-40"	3/4"	100	✓
SH04P04400100	4-40"	1"	100	✓
SH04P04400150	4-40"	1 1/2"	100	✓
SH04P05400025	5-40"	1/4"	100	✓
SH04P05400031	5-40"	5/16"	100	✓
SH04P05400037	5-40"	3/8"	100	✓
SH04P05400050	5-40"	1/2"	100	✓
SH04P05400062	5-40"	5/8"	100	✓
SH04P05400075	5-40"	3/4"	100	✓
SH04P06320018	6-32"	3/16"	100	✓
SH04P06320025	6-32"	1/4"	100	✓
SH04P06320031	6-32"	5/16"	100	✓
SH04P06320037	6-32"	3/8"	100	✓
SH04P06320050	6-32"	1/2"	100	✓
SH04P06320062	6-32"	5/8"	100	✓
SH04P06320075	6-32"	3/4"	100	✓
SH04P06320100	6-32"	1"	100	✓
SH04P06320125	6-32"	1 1/4"	100	✓
SH04P08320025	8-32"	1/4"	100	✓
SH04P08320037	8-32"	3/8"	100	✓
SH04P08320050	8-32"	1/2"	100	✓
SH04P08320062	8-32"	5/8"	100	✓
SH04P08320075	8-32"	3/4"	100	✓
SH04P08320100	8-32"	1"	100	✓
SH04P08320150	8-32"	1 1/2"	100	✓

# Socket Head Cap Screw



## UNC SOCKET HEAD CAP SCREW ANSI B18.3 (1960 SERIES)

Part	Size	Length (inch)	Pack	Stock	
				304/A2	316/A4
SH04P10240025	10-24"	1/4"	100	✓	
SH04P10240037	10-24"	3/8"	100	✓	
SH04P10240050	10-24"	1/2"	100	✓	
SH04P10240062	10-24"	5/8"	100	✓	
SH04P10240075	10-24"	3/4"	100	✓	
SH04P10240100	10-24"	1"	100	✓	
SH04P10240125	10-24"	1 1/4"	100	✓	
SH04P10240150	10-24"	1 1/2"	100	✓	
SH04P10240200	10-24"	2"	100	✓	
SH04PC0250037	1/4"	3/8"	100	✓	
SH??PC0250050	1/4"	1/2"	100	✓	✓
SH??PC0250062	1/4"	5/8"	100	✓	✓
SH??PC0250075	1/4"	3/4"	100	✓	✓
SH??PC0250100	1/4"	1"	100	✓	✓
SH??PC0250125	1/4"	1 1/4"	100	✓	✓
SH??PC0250150	1/4"	1 1/2"	100	✓	✓
SH04PC0250175	1/4"	1 3/4"	100	✓	
SH??PC0250200	1/4"	2"	100	✓	✓
SH04PC0250225	1/4"	2 1/4"	50	✓	
SH04PC0250250	1/4"	2 1/2"	50	✓	
SH04PC0250300	1/4"	3"	50	✓	
SH04PC0310050	5/16"	1/2"	100	✓	
SH??PC0310075	5/16"	3/4"	100	✓	✓
SH??PC0310100	5/16"	1"	100	✓	✓
SH??PC0310125	5/16"	1 1/4"	100	✓	✓
SH??PC0310150	5/16"	1 1/2"	100	✓	✓
SH04PC0310175	5/16"	1 3/4"	100	✓	
SH??PC0310200	5/16"	2"	50	✓	✓
SH??PC0310250	5/16"	2 1/2"	50	✓	✓
SH04PC0310300	5/16"	3"	50	✓	



?? = 04: 304 Stainless  
16: 316 Stainless

# Socket Head Cap Screw



## UNC SOCKET HEAD CAP SCREW ANSI B18.3 (1960 SERIES)

Part	Size	Length	Pack	Stock
		(inch)		
SH04PC0370075	3/8"	3/4"	100	✓
SH04PC0370100	3/8"	1"	100	✓
SH04PC0370125	3/8"	1 1/4"	100	✓
SH04PC0370150	3/8"	1 1/2"	100	✓
SH04PC0370175	3/8"	1 3/4"	100	✓
SH04PC0370200	3/8"	2"	100	✓
SH04PC0370250	3/8"	2 1/2"	50	✓
SH04PC0370300	3/8"	3"	50	✓
SH04PC0370400	3/8"	4"	50	✓
SH04PC0430100	7/16"	1"	50	✓
SH04PC0430150	7/16"	1 1/2"	50	✓
SH04PC0500100	1/2"	1"	25	✓
SH04PC0500125	1/2"	1 1/4"	25	✓
SH04PC0500150	1/2"	1 1/2"	25	✓
SH04PC0500200	1/2"	2"	25	✓
SH04PC0500250	1/2"	2 1/2"	25	✓
SH04PC0500300	1/2"	3"	25	✓

## METRIC BUTTON HEAD SOCKET SCREW ISO 7380

Part	Size	Length	Pack	Stock	
		(mm)		304/A2	316/A4
SB??PCM030006	M3	6	100	✓	✓
SB??PCM030008	M3	8	100	✓	✓
SB??PCM030010	M3	10	100	✓	✓
SB??PCM030012	M3	12	100	✓	✓
SB??PCM030016	M3	16	100	✓	✓
SB??PCM030020	M3	20	100	✓	✓
SB??PCM030025	M3	25	100	✓	✓
SB??PCM040006	M4	6	100	✓	✓
SB??PCM040008	M4	8	100	✓	✓
SB??PCM040010	M4	10	100	✓	✓
SB??PCM040012	M4	12	100	✓	✓
SB??PCM040016	M4	16	100	✓	✓
SB??PCM040020	M4	20	100	✓	✓
SB??PCM040025	M4	25	100	✓	✓





# Button Head Socket Screw



## METRIC BUTTON HEAD SOCKET SCREW ISO 7380

Part	Size	Length (mm)	Pack	Stock	
				304/A2	316/A4
SB??PCM050010	M5	10	100	✓	✓
SB??PCM050012	M5	12	100	✓	✓
SB??PCM050016	M5	16	100	✓	✓
SB??PCM050020	M5	20	100	✓	✓
SB??PCM050025	M5	25	100	✓	✓
SB??PCM050030	M5	30	100	✓	✓
SB04PCM050035	M5	35	100	✓	
SB04PCM050040	M5	40	100	✓	
SB??PCM060010	M6	10	100	✓	✓
SB??PCM060012	M6	12	100	✓	✓
SB??PCM060016	M6	16	100	✓	✓
SB??PCM060020	M6	20	100	✓	✓
SB??PCM060025	M6	25	100	✓	✓
SB??PCM060030	M6	30	100	✓	✓
SB04PCM060035	M6	35	100	✓	
SB??PCM060040	M6	40	100	✓	✓
SB04PCM060050	M6	50	100	✓	
SB04PCM080012	M8	12	100	✓	
SB??PCM080016	M8	16	100	✓	✓
SB??PCM080020	M8	20	100	✓	✓
SB??PCM080025	M8	25	100	✓	✓
SB??PCM080030	M8	30	100	✓	✓
SB04PCM080035	M8	35	100	✓	
SB??PCM080040	M8	40	100	✓	✓
SB??PCM080050	M8	50	100	✓	✓
SB04PCM080060	M8	60	100	✓	
SB04PCM100016	M10	16	50	✓	
SB??PCM100020	M10	20	50	✓	✓
SB??PCM100025	M10	25	50	✓	✓
SB??PCM100030	M10	30	50	✓	✓
SB??PCM100035	M10	35	50	✓	✓
SB??PCM100040	M10	40	50	✓	✓
SB??PCM100050	M10	50	50	✓	✓
SB04PCM120020	M12	20	25	✓	
SB04PCM120025	M12	25	25	✓	
SB04PCM120030	M12	30	25	✓	
SB04PCM120035	M12	35	25	✓	
SB04PCM120040	M12	40	25	✓	
SB04PCM120050	M12	50	25	✓	



?? = 04: 304 Stainless  
16: 316 Stainless



# Button Head Socket Screw

## UNC BUTTON HEAD SOCKET SCREW ANSI B18.3

Part	Size	Length (inch)	Pack	Stock 304/A2
SB04P06320025	6-32"	1/4"	100	✓
SB04P06320037	6-32"	3/8"	100	✓
SB04P06320050	6-32"	1/2"	100	✓
SB04P08320025	8-32"	1/4"	100	✓
SB04P08320037	8-32"	3/8"	100	✓
SB04P08320050	8-32"	1/2"	100	✓
SB04P08320075	8-32"	3/4"	100	✓
SB04P08320100	8-32"	1"	100	✓
SB04P10240037	10-24"	3/8"	100	✓
SB04P10240050	10-24"	1/2"	100	✓
SB04P10240062	10-24"	5/8"	100	✓
SB04P10240075	10-24"	3/4"	100	✓
SB04P10240100	10-24"	1"	100	✓
SB04P10240125	10-24"	1 1/4"	100	✓
SB04PC0250037	1/4"	3/8"	100	✓
SB04PC0250050	1/4"	1/2"	100	✓
SB04PC0250062	1/4"	5/8"	100	✓
SB04PC0250075	1/4"	3/4"	100	✓
SB04PC0250100	1/4"	1"	100	✓
SB04PC0250125	1/4"	1 1/4"	100	✓
SB04PC0250150	1/4"	1 1/2"	100	✓
SB04PC0250200	1/4"	2"	100	✓
SB04PC0310062	5/16"	5/8"	100	✓
SB04PC0310075	5/16"	3/4"	100	✓
SB04PC0310100	5/16"	1"	100	✓
SB04PC0310125	5/16"	1 1/4"	100	✓
SB04PC0310150	5/16"	1 1/2"	100	✓
SB04PC0310200	5/16"	2"	100	✓
SB04PC0370100	3/8"	1"	50	✓

# Flat Head Countersunk Socket Screw



## METRIC FLAT HEAD COUNTERSUNK SOCKET SCREW DIN 7991

Part	Size	Length (mm)	Pack	Stock	
				304/A2	316/A4
SC??PCM030006	M3	6	100	✓	✓
SC??PCM030008	M3	8	100	✓	✓
SC??PCM030010	M3	10	100	✓	✓
SC??PCM030012	M3	12	100	✓	✓
SC??PCM030016	M3	16	100	✓	✓
SC04PCM030020	M3	20	100	✓	
SC16PCM030025	M3	25	100		✓
SC16PCM040006	M4	6	100		✓
SC??PCM040008	M4	8	100	✓	✓
SC??PCM040010	M4	10	100	✓	✓
SC??PCM040012	M4	12	100	✓	✓
SC??PCM040016	M4	16	100	✓	✓
SC??PCM040020	M4	20	100	✓	✓
SC??PCM040025	M4	25	100	✓	✓
SC04PCM040040	M4	40	100	✓	
SC??PCM050010	M5	10	100	✓	✓
SC??PCM050012	M5	12	100	✓	✓
SC??PCM050016	M5	16	100	✓	✓
SC??PCM050020	M5	20	100	✓	✓
SC??PCM050025	M5	25	100	✓	✓
SC??PCM050030	M5	30	100	✓	✓
SC??PCM050035	M5	35	100	✓	✓
SC04PCM050040	M5	40	100	✓	
SC04PCM050050	M5	50	100	✓	
SC??PCM060010	M6	10	100	✓	✓
SC??PCM060012	M6	12	100	✓	✓
SC??PCM060016	M6	16	100	✓	✓
SC??PCM060020	M6	20	100	✓	✓
SC??PCM060025	M6	25	100	✓	✓
SC??PCM060030	M6	30	100	✓	✓
SC??PCM060035	M6	35	100	✓	✓
SC??PCM060040	M6	40	100	✓	✓
SC??PCM060050	M6	50	100	✓	✓
SC16PCM060060	M6	60	50		✓
SC16PCM060070	M6	70	50		✓
SC16PCM060080	M6	80	50		✓



?? = 04: 304 Stainless  
16: 316 Stainless



# Flat Head Countersunk Socket Screw

## METRIC FLAT HEAD COUNTERSUNK SOCKET SCREW DIN 7991

Part	Size	Length (mm)	Pack	Stock	
				304/A2	316/A4
SC??PCM080016	M8	16	100	✓	✓
SC??PCM080020	M8	20	100	✓	✓
SC??PCM080025	M8	25	100	✓	✓
SC??PCM080030	M8	30	100	✓	✓
SC??PCM080035	M8	35	100	✓	✓
SC??PCM080040	M8	40	100	✓	✓
SC04PCM080045	M8	45	100	✓	
SC??PCM080050	M8	50	100	✓	✓
SC16PCM080055	M8	55	50		✓
SC16PCM080060	M8	60	50		✓
SC16PCM080070	M8	70	50		✓
SC??PCM100020	M10	20	50	✓	✓
SC??PCM100025	M10	25	50	✓	✓
SC??PCM100030	M10	30	50	✓	✓
SC??PCM100035	M10	35	50	✓	✓
SC??PCM100040	M10	40	50	✓	✓
SC??PCM100050	M10	50	50	✓	✓
SC16PCM100060	M10	60	50		✓
SC16PCM100070	M10	70	50		✓
SC16PCM100080	M10	80	50		✓
SC16PCM100100	M10	100	50		✓
SC??PCM120025	M12	25	25	✓	✓
SC??PCM120030	M12	30	25	✓	✓
SC16PCM120035	M12	35	25		✓
SC??PCM120040	M12	40	25	✓	✓
SC??PCM120050	M12	50	25	✓	✓
SC??PCM120060	M12	60	25	✓	✓
SC04PCM120065	M12	65	25	✓	
SC04PCM120070	M12	70	25	✓	
SC??PCM120080	M12	80	25	✓	✓
SC16PCM120090	M12	90	25		✓
SC16PCM120100	M12	100	25		✓

# Flat Head Countersunk Socket Screw



## METRIC FLAT HEAD COUNTERSUNK SOCKET SCREW DIN 7991

Part	Size	Length (mm)	Pack	Stock
				316/A4
SC16PCM160030	M16	30	25	✓
SC16PCM160035	M16	35	25	✓
SC16PCM160040	M16	40	25	✓
SC16PCM160045	M16	45	25	✓
SC16PCM160050	M16	50	25	✓
SC16PCM160060	M16	60	25	✓
SC16PCM160070	M16	70	25	✓
SC16PCM160080	M16	80	25	✓
SC16PCM160090	M16	90	25	✓
SC16PCM160100	M16	100	25	✓
SC16PCM160120	M16	120	10	✓
SC16PCM200040	M20	40	10	✓
SC16PCM200050	M20	50	10	✓
SC16PCM200060	M20	60	10	✓
SC16PCM200070	M20	70	10	✓
SC16PCM200080	M20	80	10	✓
SC16PCM200090	M20	90	10	✓
SC16PCM200100	M20	100	10	✓





# Flat Head Countersunk Socket Screw

## UNC FLAT HEAD COUNTERSUNK SOCKET SCREW ANSI B18.3

Part	Size	Length (inch)	Pack	Stock 304/A2
SC04P04400025	4-40"	1/4"	100	✓
SC04P04400037	4-40"	3/8"	100	✓
SC04P06320037	6-32"	3/8"	100	✓
SC04P06320050	6-32"	1/2"	100	✓
SC04P08320075	8-32"	3/4"	100	✓
SC04P10240037	10-24"	3/8"	100	✓
SC04P10240050	10-24"	1/2"	100	✓
SC04P10240062	10-24"	5/8"	100	✓
SC04P10240075	10-24"	3/4"	100	✓
SC04P10240100	10-24"	1"	100	✓
SC04PC0250037	1/4"	3/8"	100	✓
SC04PC0250050	1/4"	1/2"	100	✓
SC04PC0250062	1/4"	5/8"	100	✓
SC04PC0250075	1/4"	3/4"	100	✓
SC04PC0250100	1/4"	1"	100	✓
SC04PC0250125	1/4"	1 1/4"	100	✓
SC04PC0250150	1/4"	1 1/2"	100	✓
SC04PC0250200	1/4"	2"	100	✓

# Socket Screw - Cup Point



## UNC SOCKET SCREW - CUP POINT ANSI B18.3

Part	Size	Length (inch)	Pack	Stock 304/A2
SG04P04400012	4-40"	1/8"	100	✓
SG04P04400025	4-40"	1/4"	100	✓
SG04P04400037	4-40"	3/8"	100	✓
SG04P05400012	5-40"	1/8"	100	✓
SG04P05400018	5-40"	3/16"	100	✓
SG04P05400025	5-40"	1/4"	100	✓
SG04P05400031	5-40"	5/16"	100	✓
SG04P05400037	5-40"	3/8"	100	✓
SG04P05400050	5-40"	1/2"	100	✓
SG04P06320012	6-32"	1/8"	100	✓
SG04P06320018	6-32"	3/16"	100	✓
SG04P06320025	6-32"	1/4"	100	✓
SG04P06320050	6-32"	1/2"	100	✓
SG04P08320050	8-32"	1/2"	100	✓
SG04P08320062	8-32"	5/8"	100	✓
SG04P08320075	8-32"	3/4"	100	✓
SG04P10240018	10-24"	3/16"	100	✓
SG04P10240031	10-24"	5/16"	100	✓
SG04P10240050	10-24"	1/2"	100	✓
SG04P10240062	10-24"	5/8"	100	✓
SG04P10240075	10-24"	3/4"	100	✓
SG04P10240100	10-24"	1"	100	✓
SG04PC0250018	1/4"	3/16"	100	✓
SG04PC0310062	5/16"	5/8"	100	✓
SG04PC0310100	5/16"	1"	100	✓
SG04PC0370125	3/8"	1 1/4"	100	✓
SG04PC0500050	1/2"	1/2"	50	✓
SG04PC0500062	1/2"	5/8"	50	✓



# Socket Screw - Cup Point



## METRIC SOCKET SCREW - CUP POINT DIN 916

Part	Size	Length (mm)	Pack	Stock 304/A2
SG04PCM030003	M3	3	100	✓
SG04PCM030004	M3	4	100	✓
SG04PCM030005	M3	5	100	✓
SG04PCM030006	M3	6	100	✓
SG04PCM030008	M3	8	100	✓
SG04PCM030010	M3	10	100	✓
SG04PCM030012	M3	12	100	✓
SG04PCM030016	M3	16	100	✓
SG04PCM030020	M3	20	100	✓
SG04PCM040004	M4	4	100	✓
SG04PCM040005	M4	5	100	✓
SG04PCM040006	M4	6	100	✓
SG04PCM040008	M4	8	100	✓
SG04PCM040010	M4	10	100	✓
SG04PCM040012	M4	12	100	✓
SG04PCM040016	M4	16	100	✓
SG04PCM040020	M4	20	100	✓
SG04PCM050005	M5	5	100	✓
SG04PCM050006	M5	6	100	✓
SG04PCM050008	M5	8	100	✓
SG04PCM050010	M5	10	100	✓
SG04PCM050012	M5	12	100	✓
SG04PCM050016	M5	16	100	✓
SG04PCM050020	M5	20	100	✓
SG04PCM050025	M5	25	100	✓
SG04PCM050030	M5	30	100	✓
SG04PCM060006	M6	6	100	✓
SG04PCM060008	M6	8	100	✓
SG04PCM060010	M6	10	100	✓
SG04PCM060012	M6	12	100	✓
SG04PCM060016	M6	16	100	✓
SG04PCM060020	M6	20	100	✓
SG04PCM060025	M6	25	100	✓
SG04PCM060030	M6	30	100	✓



# Socket Screw - Cup Point



## METRIC SOCKET SCREW - CUP POINT DIN 916

Part	Size	Length (mm)	Pack	Stock 304/A2
SG04PCM080008	M8	8	100	✓
SG04PCM080010	M8	10	100	✓
SG04PCM080012	M8	12	100	✓
SG04PCM080016	M8	16	100	✓
SG04PCM080020	M8	20	100	✓
SG04PCM080025	M8	25	100	✓
SG04PCM080030	M8	30	100	✓
SG04PCM080035	M8	35	100	✓
SG04PCM080045	M8	45	100	✓
SG04PCM100010	M10	10	100	✓
SG04PCM100016	M10	16	100	✓
SG04PCM100020	M10	20	100	✓
SG04PCM100025	M10	25	100	✓
SG04PCM100030	M10	30	100	✓
SG04PCM100050	M10	50	100	✓
SG04PCM120012	M12	12	50	✓
SG04PCM120016	M12	16	50	✓
SG04PCM120020	M12	20	50	✓
SG04PCM120025	M12	25	50	✓
SG04PCM120035	M12	35	50	✓
SG04PCM120045	M12	45	50	✓
SG04PCM120050	M12	50	50	✓
SG04PCM160035	M16	35	50	✓
SG04PCM160050	M16	50	50	✓



# Countersunk Phillips Machine Screw



## METRIC COUNTERSUNK PHILLIPS MACHINE SCREW DIN 965 (H)

Part	Size	Length (mm)	Pack	Stock	
				304/A2	316/A4
MS04CPM0250005	M2.5	5	100	✓	
MS04CPM0250006	M2.5	6	100	✓	
MS04CPM0250008	M2.5	8	100	✓	
MS04CPM0250010	M2.5	10	100	✓	
MS04CPM0250012	M2.5	12	100	✓	
MS04CPM0250016	M2.5	16	100	✓	
MS04CPM0250020	M2.5	20	100	✓	
MS04CPM030005	M3	5	100	✓	
MS04CPM030006	M3	6	100	✓	
MS04CPM030008	M3	8	100	✓	
MS04CPM030010	M3	10	100	✓	
MS??CPM030012	M3	12	100	✓	✓
MS??CPM030016	M3	16	100	✓	✓
MS??CPM030020	M3	20	100	✓	✓
MS??CPM030025	M3	25	100	✓	✓
MS04CPM030030	M3	30	100	✓	
MS04CPM030040	M3	40	100	✓	
MS04CPM030050	M3	50	100	✓	
MS04CPM040006	M4	6	100	✓	
MS??CPM040008	M4	8	100	✓	✓
MS??CPM040010	M4	10	100	✓	✓
MS??CPM040012	M4	12	100	✓	✓
MS??CPM040016	M4	16	100	✓	✓
MS??CPM040020	M4	20	100	✓	✓
MS??CPM040025	M4	25	100	✓	✓
MS??CPM040030	M4	30	100	✓	✓
MS04CPM040035	M4	35	100	✓	
MS??CPM040040	M4	40	100	✓	✓
MS04CPM040050	M4	50	100	✓	

# Countersunk Phillips Machine Screw



## METRIC COUNTERSUNK PHILLIPS MACHINE SCREW DIN 965 (H)

Part	Size	Length (mm)	Pack	Stock	
				304/A2	316/A4
MS04CPM050008	M5	8	100	✓	
MS??CPM050010	M5	10	100	✓	✓
MS??CPM050012	M5	12	100	✓	✓
MS??CPM050016	M5	16	100	✓	✓
MS??CPM050020	M5	20	100	✓	✓
MS??CPM050025	M5	25	100	✓	✓
MS??CPM050030	M5	30	100	✓	✓
MS04CPM050035	M5	35	100	✓	
MS??CPM050040	M5	40	100	✓	✓
MS??CPM050050	M5	50	100	✓	✓
MS04CPM050065	M5	65	50	✓	
MS04CPM050075	M5	75	50	✓	
MS04CPM060010	M6	10	100	✓	
MS??CPM060012	M6	12	100	✓	✓
MS??CPM060016	M6	16	100	✓	✓
MS??CPM060020	M6	20	100	✓	✓
MS??CPM060025	M6	25	100	✓	✓
MS??CPM060030	M6	30	100	✓	✓
MS??CPM060035	M6	35	100	✓	✓
MS??CPM060040	M6	40	100	✓	✓
MS04CPM060045	M6	45	100	✓	
MS??CPM060050	M6	50	100	✓	✓
MS04CPM060060	M6	60	50	✓	
MS04CPM060065	M6	65	50	✓	
MS04CPM060075	M6	75	50	✓	
MS??CPM080016	M8	16	100	✓	✓
MS??CPM080020	M8	20	100	✓	✓
MS??CPM080025	M8	25	100	✓	✓
MS??CPM080030	M8	30	100	✓	✓
MS??CPM080040	M8	40	100	✓	✓
MS??CPM080050	M8	50	100	✓	✓
MS16CPM080060	M8	60	50		✓
MS16CPM100025	M10	25	50		✓
MS16CPM100030	M10	30	50		✓
MS16CPM100050	M10	50	50		✓



?? = 04: 304 Stainless  
16: 316 Stainless



# Countersunk Phillips Machine Screw

## BSW COUNTERSUNK PHILLIPS MACHINE SCREW BS450

Part	Size	Length (inch)	Pack	Stock	
				304/A2	316/A4
MS04CPW0120025	1/8"	1/4"	100	✓	
MS04CPW0150025	5/32"	1/4"	100	✓	
MS04CPW0150037	5/32"	3/8"	100	✓	
MS04CPW0150050	5/32"	1/2"	100	✓	
MS04CPW0150100	5/32"	1"	100	✓	
MS04CPW0180025	3/16"	1/4"	100	✓	
MS??CPW0180037	3/16"	3/8"	100	✓	✓
MS??CPW0180050	3/16"	1/2"	100	✓	✓
MS04CPW0180062	3/16"	5/8"	100	✓	
MS??CPW0180075	3/16"	3/4"	100	✓	✓
MS??CPW0180100	3/16"	1"	100	✓	✓
MS??CPW0180125	3/16"	1 1/4"	100	✓	✓
MS??CPW0180150	3/16"	1 1/2"	100	✓	✓
MS??CPW0180175	3/16"	1 3/4"	100	✓	✓
MS??CPW0180200	3/16"	2"	100	✓	✓
MS??CPW0180250	3/16"	2 1/2"	100	✓	✓
MS??CPW0180300	3/16"	3"	100	✓	✓
MS04CPW0250050	1/4"	1/2"	100	✓	
MS04CPW0250062	1/4"	5/8"	100	✓	
MS??CPW0250075	1/4"	3/4"	100	✓	✓
MS??CPW0250100	1/4"	1"	100	✓	✓
MS??CPW0250125	1/4"	1 1/4"	100	✓	✓
MS??CPW0250150	1/4"	1 1/2"	100	✓	✓
MS04CPW0250175	1/4"	1 3/4"	100	✓	
MS??CPW0250200	1/4"	2"	100	✓	✓
MS04CPW0250250	1/4"	2 1/2"	100	✓	
MS04CPW0250300	1/4"	3"	100	✓	
MS04CPW0250400	1/4"	4"	100	✓	
MS04CPW0310075	5/16"	3/4"	100	✓	
MS04CPW0310100	5/16"	1"	100	✓	
MS04CPW0310125	5/16"	1 1/4"	100	✓	
MS04CPW0310150	5/16"	1 1/2"	100	✓	
MS04CPW0310200	5/16"	2"	100	✓	
MS04CPW0310250	5/16"	2 1/2"	50	✓	
MS04CPW0310300	5/16"	3"	50	✓	

# Countersunk Phillips Machine Screw



## UNC COUNTERSUNK PHILLIPS MACHINE SCREW ANSI B18.6.3

Part	Size	Length (inch)	Pack	Stock 304/A2
MS04CP02560018	2-56"	3/16"	100	✓
MS04CP02560025	2-56"	1/4"	100	✓
MS04CP02560037	2-56"	3/8"	100	✓
MS04CP02560050	2-56"	1/2"	100	✓
MS04CP02560062	2-56"	5/8"	100	✓
MS04CP04400025	4-40"	1/4"	100	✓
MS04CP04400031	4-40"	5/16"	100	✓
MS04CP04400037	4-40"	3/8"	100	✓
MS04CP04400050	4-40"	1/2"	100	✓
MS04CP04400062	4-40"	5/8"	100	✓
MS04CP04400075	4-40"	3/4"	100	✓
MS04CP04400100	4-40"	1"	100	✓
MS04CP06320025	6-32"	1/4"	100	✓
MS04CP06320031	6-32"	5/16"	100	✓
MS04CP06320037	6-32"	3/8"	100	✓
MS04CP06320050	6-32"	1/2"	100	✓
MS04CP06320062	6-32"	5/8"	100	✓
MS04CP06320075	6-32"	3/4"	100	✓
MS04CP06320100	6-32"	1"	100	✓
MS04CP06320125	6-32"	1 1/4"	100	✓
MS04CP06320150	6-32"	1 1/2"	100	✓
MS04CP06320200	6-32"	2"	100	✓
MS04CP08320025	8-32"	1/4"	100	✓
MS04CP08320037	8-32"	3/8"	100	✓
MS04CP08320050	8-32"	1/2"	100	✓
MS04CP08320062	8-32"	5/8"	100	✓
MS04CP08320075	8-32"	3/4"	100	✓
MS04CP08320100	8-32"	1"	100	✓
MS04CP08320125	8-32"	1 1/4"	100	✓
MS04CP08320150	8-32"	1 1/2"	100	✓
MS04CP08320200	8-32"	2"	100	✓
MS04CP12240050	12-24"	1/2"	100	✓



# Countersunk Phillips Machine Screw



## UNF COUNTERSUNK PHILLIPS MACHINE SCREW ANSI B18.6.3

Part	Size	Length	Pack	Stock
		(inch)		
MS04CPF010320037	10-32"	3/8"	100	✓
MS04CPF010320050	10-32"	1/2"	100	✓
MS04CPF010320062	10-32"	5/8"	100	✓
MS04CPF010320075	10-32"	3/4"	100	✓
MS04CPF010320100	10-32"	1"	100	✓
MS04CPF010320125	10-32"	1 1/4"	100	✓
MS04CPF010320150	10-32"	1 1/2"	100	✓
MS04CPF010320200	10-32"	2"	100	✓

## METRIC PAN PHILLIPS MACHINE SCREW DIN 7985 (H)

Part	Size	Length	Pack	Stock	
		(mm)		304/A2	316/A4
MS04PPM0250005	M2.5	5	100	✓	
MS04PPM0250006	M2.5	6	100	✓	
MS04PPM0250008	M2.5	8	100	✓	
MS04PPM0250010	M2.5	10	100	✓	
MS04PPM0250012	M2.5	12	100	✓	
MS04PPM0250016	M2.5	16	100	✓	
MS04PPM0250020	M2.5	20	100	✓	
MS04PPM0250025	M2.5	25	100	✓	
MS??PPM030006	M3	6	100	✓	✓
MS??PPM030008	M3	8	100	✓	✓
MS??PPM030010	M3	10	100	✓	✓
MS??PPM030012	M3	12	100	✓	✓
MS??PPM030016	M3	16	100	✓	✓
MS??PPM030020	M3	20	100	✓	✓
MS??PPM030025	M3	25	100	✓	✓
MS04PPM030030	M3	30	100	✓	
MS04PPM030035	M3	35	100	✓	
MS04PPM030040	M3	40	100	✓	
MS04PPM030050	M3	50	100	✓	

# Pan Phillips Machine Screw



## METRIC PAN PHILLIPS MACHINE SCREW DIN 7985 (H)

Part	Size	Length (mm)	Pack	Stock	
				304/A2	316/A4
MS??PPM040006	M4	6	100	✓	✓
MS??PPM040008	M4	8	100	✓	✓
MS??PPM040010	M4	10	100	✓	✓
MS??PPM040012	M4	12	100	✓	✓
MS??PPM040016	M4	16	100	✓	✓
MS??PPM040020	M4	20	100	✓	✓
MS??PPM040025	M4	25	100	✓	✓
MS??PPM040030	M4	30	100	✓	✓
MS04PPM040035	M4	35	100	✓	
MS04PPM040040	M4	40	100	✓	
MS??PPM040050	M4	50	100	✓	✓
MS04PPM050008	M5	8	100	✓	
MS??PPM050010	M5	10	100	✓	✓
MS??PPM050012	M5	12	100	✓	✓
MS??PPM050016	M5	16	100	✓	✓
MS??PPM050020	M5	20	100	✓	✓
MS??PPM050025	M5	25	100	✓	✓
MS??PPM050030	M5	30	100	✓	✓
MS04PPM050035	M5	35	100	✓	
MS??PPM050040	M5	40	100	✓	✓
MS??PPM050050	M5	50	100	✓	✓
MS04PPM050065	M5	65	100	✓	
MS04PPM050075	M5	75	100	✓	
MS04PPM060008	M6	8	100	✓	
MS04PPM060010	M6	10	100	✓	
MS??PPM060012	M6	12	100	✓	✓
MS??PPM060016	M6	16	100	✓	✓
MS??PPM060020	M6	20	100	✓	✓
MS??PPM060025	M6	25	100	✓	✓
MS??PPM060030	M6	30	100	✓	✓
MS04PPM060035	M6	35	100	✓	
MS??PPM060040	M6	40	100	✓	✓
MS??PPM060050	M6	50	100	✓	✓
MS04PPM060060	M6	60	50	✓	
MS04PPM060065	M6	65	50	✓	
MS04PPM060075	M6	75	50	✓	
MS04PPM080020	M8	20	100	✓	
MS04PPM080025	M8	25	100	✓	
MS04PPM080030	M8	30	100	✓	
MS04PPM080040	M8	40	100	✓	
MS04PPM080050	M8	50	100	✓	



?? = 04: 304 Stainless  
16: 316 Stainless



# Pan Phillips Machine Screw

## BSW PAN PHILLIPS MACHINE SCREW BS450

Part	Size	Length (inch)	Pack	Stock	
				304/A2	316/A4
MS04PPW0120050	1/8"	1/2"	100	✓	
MS04PPW0120075	1/8"	3/4"	100	✓	
MS04PPW0120100	1/8"	1"	100	✓	
MS04PPW0180025	3/16"	1/4"	100	✓	
MS04PPW0180037	3/16"	3/8"	100	✓	
MS??PPW0180050	3/16"	1/2"	100	✓	✓
MS04PPW0180062	3/16"	5/8"	100	✓	
MS??PPW0180075	3/16"	3/4"	100	✓	✓
MS??PPW0180100	3/16"	1"	100	✓	✓
MS??PPW0180125	3/16"	1 1/4"	100	✓	✓
MS??PPW0180150	3/16"	1 1/2"	100	✓	✓
MS04PPW0180175	3/16"	1 3/4"	100	✓	
MS??PPW0180200	3/16"	2"	100	✓	✓
MS??PPW0180250	3/16"	2 1/2"	100	✓	✓
MS??PPW0180300	3/16"	3"	100	✓	✓
MS04PPW0250037	1/4"	3/8"	100	✓	
MS04PPW0250050	1/4"	1/2"	100	✓	
MS04PPW0250062	1/4"	5/8"	100	✓	
MS??PPW0250075	1/4"	3/4"	100	✓	✓
MS??PPW0250100	1/4"	1"	100	✓	✓
MS??PPW0250125	1/4"	1 1/4"	100	✓	✓
MS??PPW0250150	1/4"	1 1/2"	100	✓	✓
MS04PPW0250175	1/4"	1 3/4"	100	✓	
MS??PPW0250200	1/4"	2"	100	✓	✓
MS04PPW0250250	1/4"	2 1/2"	100	✓	
MS??PPW0250300	1/4"	3"	100	✓	✓
MS04PPW0250350	1/4"	3 1/2"	100	✓	
MS04PPW0250400	1/4"	4"	100	✓	
MS04PPW0310075	5/16"	3/4"	100	✓	
MS04PPW0310100	5/16"	1"	100	✓	
MS04PPW0310150	5/16"	1 1/2"	100	✓	
MS04PPW0310175	5/16"	1 3/4"	100	✓	
MS04PPW0310200	5/16"	2"	100	✓	
MS04PPW0310250	5/16"	2 1/2"	50	✓	
MS04PPW0310300	5/16"	3"	50	✓	



# Pan Phillips Machine Screw



## UNC PAN PHILLIPS MACHINE SCREW ANSI B18.6.3

Part	Size	Length (inch)	Pack	Stock 304/A2
MS04PP04400018	4-40"	3/16"	100	✓
MS04PP04400025	4-40"	1/4"	100	✓
MS04PP04400031	4-40"	5/16"	100	✓
MS04PP04400037	4-40"	3/8"	100	✓
MS04PP04400050	4-40"	1/2"	100	✓
MS04PP04400062	4-40"	5/8"	100	✓
MS04PP04400075	4-40"	3/4"	100	✓
MS04PP04400100	4-40"	1"	100	✓
MS04PP06320025	6-32"	1/4"	100	✓
MS04PP06320031	6-32"	5/16"	100	✓
MS04PP06320037	6-32"	3/8"	100	✓
MS04PP06320050	6-32"	1/2"	100	✓
MS04PP06320062	6-32"	5/8"	100	✓
MS04PP06320075	6-32"	3/4"	100	✓
MS04PP06320100	6-32"	1"	100	✓
MS04PP06320125	6-32"	1 1/4"	100	✓
MS04PP06320150	6-32"	1 1/2"	100	✓
MS04PP06320200	6-32"	2"	100	✓
MS04PP08320025	8-32"	1/4"	100	✓
MS04PP08320037	8-32"	3/8"	100	✓
MS04PP08320050	8-32"	1/2"	100	✓
MS04PP08320062	8-32"	5/8"	100	✓
MS04PP08320075	8-32"	3/4"	100	✓
MS04PP08320100	8-32"	1"	100	✓
MS04PP08320125	8-32"	1 1/4"	100	✓
MS04PP08320150	8-32"	1 1/2"	100	✓
MS04PP08320175	8-32"	1 3/4"	100	✓
MS04PP08320200	8-32"	2"	100	✓





# Pan / Mushroom Phillips Machine Screw

## UNF PAN PHILLIPS MACHINE SCREW ANSI B18.6.3

Part	Size	Length (inch)	Pack	Stock 304/A2
MS04PPF10320037	10-32"	3/8"	100	✓
MS04PPF10320050	10-32"	1/2"	100	✓
MS04PPF10320075	10-32"	3/4"	100	✓
MS04PPF10320100	10-32"	1"	100	✓
MS04PPF10320125	10-32"	1 1/4"	100	✓
MS04PPF10320150	10-32"	1 1/2"	100	✓
MS04PPF10320200	10-32"	2"	100	✓

## METRIC MUSHROOM PHILLIPS MACHINE SCREW AS1427

Part	Size	Length (mm)	Pack	Stock 304/A2
MS04MPM050020	M5	20	100	✓
MS04MPM050025	M5	25	100	✓
MS04MPM060025	M6	25	100	✓
MS04MPM060030	M6	30	100	✓
MS04MPM060040	M6	40	100	✓

## BSW MUSHROOM PHILLIPS MACHINE SCREW BS450

Part	Size	Length (inch)	Pack	Stock 304/A2
MS04MPW0180050	3/16"	1/2"	100	✓
MS04MPW0180062	3/16"	5/8"	100	✓
MS04MPW0180075	3/16"	3/4"	100	✓
MS04MPW0180100	3/16"	1"	100	✓
MS04MPW0180125	3/16"	1 1/4"	100	✓
MS04MPW0180150	3/16"	1 1/2"	100	✓
MS04MPW0250050	1/4"	1/2"	100	✓
MS04MPW0250075	1/4"	3/4"	100	✓
MS04MPW0250100	1/4"	1"	100	✓

# Cheese Slot Machine Screw



## METRIC CHEESE SLOT MACHINE SCREW DIN 84

Part	Size	Length (mm)	Pack	Stock	
				304/A2	316/A4
MS??ESM030006	M3	6	200	✓	✓
MS??ESM030008	M3	8	200	✓	✓
MS??ESM030010	M3	10	200	✓	✓
MS??ESM030012	M3	12	200	✓	✓
MS??ESM030016	M3	16	200	✓	✓
MS??ESM030020	M3	20	200	✓	✓
MS??ESM030025	M3	25	200	✓	✓
MS04ESM030030	M3	30	200	✓	
MS16ESM030035	M3	35	200		✓
MS04ESM030040	M3	40	200	✓	
MS04ESM030050	M3	50	200	✓	
MS??ESM040006	M4	6	200	✓	✓
MS??ESM040008	M4	8	200	✓	✓
MS??ESM040010	M4	10	200	✓	✓
MS??ESM040012	M4	12	200	✓	✓
MS??ESM040016	M4	16	200	✓	✓
MS??ESM040020	M4	20	200	✓	✓
MS??ESM040025	M4	25	200	✓	✓
MS??ESM040030	M4	30	200	✓	✓
MS??ESM040040	M4	40	200	✓	✓
MS??ESM040050	M4	50	200	✓	✓
MS04ESM050006	M5	6	100	✓	
MS04ESM050008	M5	8	100	✓	
MS??ESM050010	M5	10	100	✓	✓
MS??ESM050012	M5	12	100	✓	✓
MS??ESM050016	M5	16	100	✓	✓
MS??ESM050020	M5	20	100	✓	✓
MS??ESM050025	M5	25	100	✓	✓
MS??ESM050030	M5	30	100	✓	✓
MS04ESM050035	M5	35	100	✓	
MS??ESM050040	M5	40	100	✓	✓
MS??ESM050050	M5	50	100	✓	✓
MS??ESM050060	M5	60	100	✓	✓
MS??ESM050070	M5	70	100	✓	✓



?? = 04: 304 Stainless  
16: 316 Stainless

# Cheese Slot Machine Screw



## METRIC CHEESE SLOT MACHINE SCREW DIN 84

Part	Size	Length (mm)	Pack	Stock	
				304/A2	316/A4
MS??ESM060010	M6	10	100	✓	✓
MS??ESM060012	M6	12	100	✓	✓
MS??ESM060016	M6	16	100	✓	✓
MS??ESM060020	M6	20	100	✓	✓
MS??ESM060025	M6	25	100	✓	✓
MS??ESM060030	M6	30	100	✓	✓
MS??ESM060035	M6	35	100	✓	✓
MS??ESM060040	M6	40	100	✓	✓
MS??ESM060050	M6	50	100	✓	✓
MS??ESM060060	M6	60	100	✓	✓
MS??ESM060070	M6	70	100	✓	✓



## METRIC COUNTERSUNK SLOT MACHINE SCREW DIN 963

Part	Size	Length (mm)	Pack	Stock	
				304/A2	316/A4
MS??CSM030008	M3	8	200	✓	✓
MS??CSM030010	M3	10	200	✓	✓
MS??CSM030012	M3	12	200	✓	✓
MS??CSM030016	M3	16	200	✓	✓
MS??CSM030020	M3	20	200	✓	✓
MS??CSM030025	M3	25	200	✓	✓
MS04CSM030030	M3	30	200	✓	
MS04CSM030040	M3	40	200	✓	
MS??CSM040008	M4	8	200	✓	✓
MS??CSM040010	M4	10	200	✓	✓
MS??CSM040012	M4	12	200	✓	✓
MS??CSM040016	M4	16	200	✓	✓
MS??CSM040020	M4	20	200	✓	✓
MS??CSM040025	M4	25	200	✓	✓
MS??CSM040030	M4	30	200	✓	✓
MS??CSM040040	M4	40	200	✓	✓
MS??CSM040050	M4	50	200	✓	✓

# Countersunk Slot Machine Screw



## METRIC COUNTERSUNK SLOT MACHINE SCREW DIN 963

Part	Size	Length (mm)	Pack	Stock	
				304/A2	316/A4
MS??CSM050010	M5	10	100	✓	✓
MS??CSM050012	M5	12	100	✓	✓
MS??CSM050016	M5	16	100	✓	✓
MS??CSM050020	M5	20	100	✓	✓
MS??CSM050025	M5	25	100	✓	✓
MS??CSM050030	M5	30	100	✓	✓
MS04CSM050035	M5	35	100	✓	
MS??CSM050040	M5	40	100	✓	✓
MS??CSM050045	M5	45	100	✓	✓
MS??CSM050050	M5	50	100	✓	✓
MS??CSM050060	M5	60	100	✓	✓
MS??CSM050065	M5	65	100	✓	✓
MS??CSM050070	M5	70	100	✓	✓
MS??CSM060010	M6	10	100	✓	✓
MS??CSM060012	M6	12	100	✓	✓
MS??CSM060016	M6	16	100	✓	✓
MS??CSM060020	M6	20	100	✓	✓
MS??CSM060025	M6	25	100	✓	✓
MS??CSM060030	M6	30	100	✓	✓
MS??CSM060035	M6	35	100	✓	✓
MS??CSM060040	M6	40	100	✓	✓
MS??CSM060045	M6	45	100	✓	✓
MS??CSM060050	M6	50	100	✓	✓
MS??CSM060060	M6	60	100	✓	✓
MS??CSM060065	M6	65	100	✓	✓
MS??CSM060070	M6	70	100	✓	✓



?? = 04: 304 Stainless  
16: 316 Stainless



# Round Slot Machine Screw

## BSW ROUND SLOT MACHINE SCREW BS450

Part	Size	Length (inch)	Pack	Stock	
				304/A2	316/A4
MS04OSW0120025	1/8"	1/4"	200	✓	
MS04OSW0120037	1/8"	3/8"	200	✓	
MS04OSW0120050	1/8"	1/2"	200	✓	
MS04OSW0120062	1/8"	5/8"	200	✓	
MS04OSW0120075	1/8"	3/4"	200	✓	
MS04OSW0120100	1/8"	1"	200	✓	
MS04OSW0120125	1/8"	1 1/4"	200	✓	
MS04OSW0120150	1/8"	1 1/2"	200	✓	
MS04OSW0120200	1/8"	2"	200	✓	
MS04OSW0150025	5/32"	1/4"	200	✓	
MS04OSW0150037	5/32"	3/8"	200	✓	
MS04OSW0150050	5/32"	1/2"	200	✓	
MS04OSW0150062	5/32"	5/8"	200	✓	
MS04OSW0150075	5/32"	3/4"	200	✓	
MS04OSW0150100	5/32"	1"	200	✓	
MS04OSW0150125	5/32"	1 1/4"	200	✓	
MS04OSW0150150	5/32"	1 1/2"	200	✓	
MS04OSW0150200	5/32"	2"	200	✓	
MS??OSW0180025	3/16"	1/4"	100	✓	✓
MS??OSW0180037	3/16"	3/8"	100	✓	✓
MS??OSW0180050	3/16"	1/2"	100	✓	✓
MS??OSW0180062	3/16"	5/8"	100	✓	✓
MS??OSW0180075	3/16"	3/4"	100	✓	✓
MS??OSW0180100	3/16"	1"	100	✓	✓
MS??OSW0180125	3/16"	1 1/4"	100	✓	✓
MS04OSW0180150	3/16"	1 1/2"	100	✓	
MS??OSW0180175	3/16"	1 3/4"	100	✓	✓
MS??OSW0180200	3/16"	2"	100	✓	✓
MS??OSW0180250	3/16"	2 1/2"	100	✓	✓
MS??OSW0180300	3/16"	3"	100	✓	✓

# Countersunk Phillips Wood Screw



## BSW ROUND SLOT MACHINE SCREW BS450

Part	Size	Length	Pack	Stock	
		(inch)		304/A2	316/A4
MS04OSW0250037	1/4"	3/8"	100	✓	
MS??OSW0250050	1/4"	1/2"	100	✓	✓
MS??OSW0250062	1/4"	5/8"	100	✓	✓
MS??OSW0250075	1/4"	3/4"	100	✓	✓
MS??OSW0250100	1/4"	1"	100	✓	✓
MS??OSW0250125	1/4"	1 1/4"	100	✓	✓
MS??OSW0250150	1/4"	1 1/2"	100	✓	✓
MS04OSW0250175	1/4"	1 3/4"	100	✓	
MS??OSW0250200	1/4"	2"	100	✓	✓
MS04OSW0250225	1/4"	2 1/4"	50	✓	
MS??OSW0250250	1/4"	2 1/2"	50	✓	✓
MS??OSW0250300	1/4"	3"	50	✓	✓

## COUNTERSUNK PHILLIPS WOOD SCREW JIS B1112

Part	Size	Length	Pack	Stock	
		(inch)		304/A2	
TSD04CP#060075	6G	3/4"	200	✓	
TSD04CP#060100	6G	1"	200	✓	
TSD04CP#080075	8G	3/4"	200	✓	
TSD04CP#080100	8G	1"	200	✓	
TSD04CP#080125	8G	1 1/4"	200	✓	
TSD04CP#080150	8G	1 1/2"	200	✓	
TSD04CP#100100	10G	1"	100	✓	
TSD04CP#100150	10G	1 1/2"	100	✓	
TSD04CP#100175	10G	1 3/4"	100	✓	
TSD04CP#100200	10G	2"	100	✓	
TSD04CP#120125	12G	1 1/4"	100	✓	
TSD04CP#120150	12G	1 1/2"	100	✓	
TSD04CP#120200	12G	2"	100	✓	
TSD04CP#120250	12G	2 1/2"	100	✓	
TSD04CP#140200	14G	2"	100	✓	
TSD04CP#140250	14G	2 1/2"	100	✓	
TSD04CP#140300	14G	3"	100	✓	



?? = 04: 304 Stainless  
16: 316 Stainless

# Countersunk Phillips Self Tapping Screw



## COUNTERSUNK PHILLIPS SELF TAPPING SCREW ANSI B18.6.4

Part	Size	Length (inch)	Pack	Stock	
				304/A2	316/A4
TSS??CP#040025	4G	1/4"	200	✓	✓
TSS??CP#040037	4G	3/8"	200	✓	✓
TSS??CP#040050	4G	1/2"	200	✓	✓
TSS??CP#040062	4G	5/8"	200	✓	✓
TSS??CP#040075	4G	3/4"	200	✓	✓
TSS??CP#040100	4G	1"	200	✓	✓
TSS04CP#060037	6G	3/8"	200	✓	
TSS??CP#060050	6G	1/2"	200	✓	✓
TSS??CP#060062	6G	5/8"	200	✓	✓
TSS??CP#060075	6G	3/4"	200	✓	✓
TSS??CP#060100	6G	1"	200	✓	✓
TSS??CP#060125	6G	1 1/4"	200	✓	✓
TSS??CP#060150	6G	1 1/2"	200	✓	✓
TSS04CP#060175	6G	1 3/4"	200	✓	
TSS04CP#060200	6G	2"	200	✓	
TSS??CP#080037	8G	3/8"	200	✓	✓
TSS??CP#080050	8G	1/2"	200	✓	✓
TSS??CP#080062	8G	5/8"	200	✓	✓
TSS??CP#080075	8G	3/4"	200	✓	✓
TSS??CP#080100	8G	1"	200	✓	✓
TSS??CP#080125	8G	1 1/4"	200	✓	✓
TSS??CP#080150	8G	1 1/2"	200	✓	✓
TSS??CP#080175	8G	1 3/4"	200	✓	✓
TSS??CP#080200	8G	2"	200	✓	✓
TSS04CP#080250	8G	2 1/2"	100	✓	
TSS04CP#080300	8G	3"	100	✓	
TSS04CP#100037	10G	3/8"	100	✓	
TSS??CP#100050	10G	1/2"	100	✓	✓
TSS??CP#100062	10G	5/8"	100	✓	✓
TSS??CP#100075	10G	3/4"	100	✓	✓
TSS??CP#100100	10G	1"	100	✓	✓
TSS??CP#100125	10G	1 1/4"	100	✓	✓
TSS??CP#100150	10G	1 1/2"	100	✓	✓
TSS04CP#100175	10G	1 3/4"	100	✓	
TSS??CP#100200	10G	2"	100	✓	✓
TSS??CP#100250	10G	2 1/2"	100	✓	✓
TSS04CP#100300	10G	3"	100	✓	



# Countersunk Phillips Self Tapping Screw



## COUNTERSUNK PHILLIPS SELF TAPPING SCREW ANSI B18.6.4

Part	Size	Length	Pack	Stock	
		(inch)		304/A2	316/A4
TSS04CP#120050	12G	1/2"	100	✓	
TSS04CP#120062	12G	5/8"	100	✓	
TSS??CP#120075	12G	3/4"	100	✓	✓
TSS??CP#120100	12G	1"	100	✓	✓
TSS??CP#120125	12G	1 1/4"	100	✓	✓
TSS??CP#120150	12G	1 1/2"	100	✓	✓
TSS??CP#120175	12G	1 3/4"	100	✓	✓
TSS??CP#120200	12G	2"	100	✓	✓
TSS??CP#120250	12G	2 1/2"	100	✓	✓
TSS04CP#120300	12G	3"	100	✓	
TSS04CP#140075	14G	3/4"	100	✓	
TSS??CP#140100	14G	1"	100	✓	✓
TSS04CP#140125	14G	1 1/4"	100	✓	
TSS??CP#140150	14G	1 1/2"	100	✓	✓
TSS04CP#140175	14G	1 3/4"	100	✓	
TSS??CP#140200	14G	2"	100	✓	✓
TSS04CP#140250	14G	2 1/2"	100	✓	
TSS04CP#140300	14G	3"	100	✓	



?? = 04: 304 Stainless  
16: 316 Stainless

# Pan Phillips Self Tapping Screw



## PAN PHILLIPS SELF TAPPING SCREW ANSI B18.6.4

Part	Size	Length (inch)	Pack	Stock	
				304/A2	316/A4
TSS??PP#040025	4G	1/4"	200	✓	✓
TSS??PP#040037	4G	3/8"	200	✓	✓
TSS??PP#040050	4G	1/2"	200	✓	✓
TSS??PP#040062	4G	5/8"	200	✓	✓
TSS??PP#040075	4G	3/4"	200	✓	✓
TSS??PP#040100	4G	1"	200	✓	✓
TSS04PP#060025	6G	1/4"	200	✓	
TSS??PP#060037	6G	3/8"	200	✓	✓
TSS??PP#060050	6G	1/2"	200	✓	✓
TSS??PP#060062	6G	5/8"	200	✓	✓
TSS??PP#060075	6G	3/4"	200	✓	✓
TSS??PP#060100	6G	1"	200	✓	✓
TSS??PP#060125	6G	1 1/4"	200	✓	✓
TSS??PP#060150	6G	1 1/2"	200	✓	✓
TSS04PP#060175	6G	1 3/4"	200	✓	
TSS04PP#060200	6G	2"	200	✓	
TSS??PP#080025	8G	1/4"	200	✓	✓
TSS??PP#080037	8G	3/8"	200	✓	✓
TSS??PP#080050	8G	1/2"	200	✓	✓
TSS??PP#080062	8G	5/8"	200	✓	✓
TSS??PP#080075	8G	3/4"	200	✓	✓
TSS??PP#080100	8G	1"	200	✓	✓
TSS??PP#080125	8G	1 1/4"	200	✓	✓
TSS??PP#080150	8G	1 1/2"	200	✓	✓
TSS04PP#080175	8G	1 3/4"	200	✓	
TSS??PP#080200	8G	2"	200	✓	✓
TSS04PP#080250	8G	2 1/2"	100	✓	
TSS04PP#080300	8G	3"	100	✓	
TSS04PP#100037	10G	3/8"	100	✓	
TSS??PP#100050	10G	1/2"	100	✓	✓
TSS??PP#100062	10G	5/8"	100	✓	✓
TSS??PP#100075	10G	3/4"	100	✓	✓
TSS??PP#100100	10G	1"	100	✓	✓
TSS??PP#100125	10G	1 1/4"	100	✓	✓
TSS??PP#100150	10G	1 1/2"	100	✓	✓
TSS04PP#100175	10G	1 3/4"	100	✓	
TSS??PP#100200	10G	2"	100	✓	✓
TSS04PP#100250	10G	2 1/2"	100	✓	
TSS04PP#100300	10G	3"	100	✓	

# Type U Drive Screw



## PAN PHILLIPS SELF TAPPING SCREW ANSI B18.6.4

Part	Size	Length	Pack	Stock	
		(inch)		304/A2	316/A4
TSS04PP#120050	12G	1/2"	100	✓	
TSS04PP#120062	12G	5/8"	100	✓	
TSS??PP#120075	12G	3/4"	100	✓	✓
TSS??PP#120100	12G	1"	100	✓	✓
TSS??PP#120125	12G	1 1/4"	100	✓	✓
TSS??PP#120150	12G	1 1/2"	100	✓	✓
TSS04PP#120175	12G	1 3/4"	100	✓	
TSS??PP#120200	12G	2"	100	✓	✓
TSS??PP#120250	12G	2 1/2"	100	✓	✓
TSS04PP#120300	12G	3"	100	✓	
TSS04PP#140050	14G	1/2"	100	✓	
TSS04PP#140062	14G	5/8"	100	✓	
TSS??PP#140075	14G	3/4"	100	✓	✓
TSS??PP#140100	14G	1"	100	✓	✓
TSS04PP#140125	14G	1 1/4"	100	✓	
TSS??PP#140150	14G	1 1/2"	100	✓	✓
TSS04PP#140175	14G	1 3/4"	100	✓	
TSS??PP#140200	14G	2"	100	✓	✓
TSS04PP#140250	14G	2 1/2"	100	✓	
TSS04PP#140300	14G	3"	100	✓	

## TYPE U DRIVE SCREW ANSI B18.6.4

Part	Size	Length	Drill Size	Pack	Stock	
		(inch)			304/A2	
QDS04RU#040018	4G	3/16"	No. 37	200	✓	
QDS04RU#040031	4G	5/16"	No. 37	200	✓	
QDS04RU#040037	4G	3/8"	No. 37	200	✓	
QDS04RU#060031	6G	5/16"	No. 31	200	✓	



?? = 04: 304 Stainless  
16: 316 Stainless

# Post Hex Socket Button Machine Screw



## METRIC POST HEX SOCKET BUTTON MACHINE SCREW

Part	Size	Length (mm)	Recess A/F	Pack	Stock 304/A2
IMS04BHM040006	M4	6	2.5	100	✓
IMS04BHM040008	M4	8	2.5	100	✓
IMS04BHM040010	M4	10	2.5	100	✓
IMS04BHM040012	M4	12	2.5	100	✓
IMS04BHM040016	M4	16	2.5	100	✓
IMS04BHM040020	M4	20	2.5	100	✓
IMS04BHM040025	M4	25	2.5	100	✓
IMS04BHM040030	M4	30	2.5	100	✓
IMS04BHM050010	M5	10	3.0	100	✓
IMS04BHM050012	M5	12	3.0	100	✓
IMS04BHM050016	M5	16	3.0	100	✓
IMS04BHM050020	M5	20	3.0	100	✓
IMS04BHM050025	M5	25	3.0	100	✓
IMS04BHM050030	M5	30	3.0	100	✓
IMS04BHM060010	M6	10	4.0	100	✓
IMS04BHM060012	M6	12	4.0	100	✓
IMS04BHM060016	M6	16	4.0	100	✓
IMS04BHM060020	M6	20	4.0	100	✓
IMS04BHM060025	M6	25	4.0	100	✓
IMS04BHM060030	M6	30	4.0	100	✓
IMS04BHM060035	M6	35	4.0	100	✓
IMS04BHM060040	M6	40	4.0	100	✓
IMS04BHM060045	M6	45	4.0	100	✓
IMS04BHM060050	M6	50	4.0	100	✓
IMS04BHM080016	M8	16	5.0	100	✓
IMS04BHM080020	M8	20	5.0	100	✓
IMS04BHM080025	M8	25	5.0	100	✓
IMS04BHM080030	M8	30	5.0	100	✓
IMS04BHM080035	M8	35	5.0	100	✓
IMS04BHM080040	M8	40	5.0	100	✓
IMS04BHM080050	M8	50	5.0	100	✓
IMS04BHM080060	M8	60	5.0	100	✓

# Post Hex Socket Countersunk Machine Screw



## METRIC POST HEX SOCKET COUNTERSUNK MACHINE SCREW

Part	Size	Length (mm)	Recess A/F	Pack	Stock 304/A2
IMS04CHM040008	M4	8	2.5	100	✓
IMS04CHM040010	M4	10	2.5	100	✓
IMS04CHM040012	M4	12	2.5	100	✓
IMS04CHM040016	M4	16	2.5	100	✓
IMS04CHM040020	M4	20	2.5	100	✓
IMS04CHM040025	M4	25	2.5	100	✓
IMS04CHM050010	M5	10	3.0	100	✓
IMS04CHM050012	M5	12	3.0	100	✓
IMS04CHM050016	M5	16	3.0	100	✓
IMS04CHM050020	M5	20	3.0	100	✓
IMS04CHM050025	M5	25	3.0	100	✓
IMS04CHM050030	M5	30	3.0	100	✓
IMS04CHM060010	M6	10	4.0	100	✓
IMS04CHM060012	M6	12	4.0	100	✓
IMS04CHM060016	M6	16	4.0	100	✓
IMS04CHM060020	M6	20	4.0	100	✓
IMS04CHM060025	M6	25	4.0	100	✓
IMS04CHM060030	M6	30	4.0	50	✓
IMS04CHM060040	M6	40	4.0	50	✓
IMS04CHM060045	M6	45	4.0	50	✓
IMS04CHM060050	M6	50	4.0	50	✓
IMS04CHM080016	M8	16	5.0	50	✓
IMS04CHM080020	M8	20	5.0	50	✓
IMS04CHM080025	M8	25	5.0	50	✓
IMS04CHM080030	M8	30	5.0	50	✓
IMS04CHM080040	M8	40	5.0	50	✓



?? = 04: 304 Stainless  
16: 316 Stainless

# Post Hex / Torx® Socket One Way Raised Countersunk



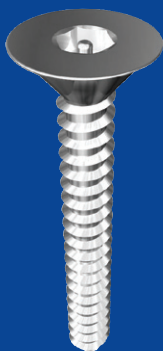
## METRIC POST TORX® SOCKET BUTTON MACHINE SCREW

Part	Size	Length	Recess	Pack	Stock
		(mm)	Size		
IMS04BTM060016	M6	16	T30	100	✓
IMS04BTM060020	M6	20	T30	100	✓
IMS04BTM060025	M6	25	T30	100	✓
IMS04BTM060030	M6	30	T30	100	✓
IMS04BTM060040	M6	40	T30	100	✓
IMS04BTM080016	M8	16	T40	100	✓
IMS04BTM080020	M8	20	T40	100	✓
IMS04BTM080025	M8	25	T40	100	✓
IMS04BTM080030	M8	30	T40	100	✓
IMS04BTM080040	M8	40	T40	100	✓
IMS04BTM080050	M8	50	T40	100	✓



## ONE WAY RAISED SELF TAPPING SCREW

Part	Size	Length	Pack	Stock
		(inch)		
ISS04RO#080050	8G	1/2"	100	✓
ISS04RO#080075	8G	3/4"	100	✓
ISS04RO#080100	8G	1"	100	✓
ISS04RO#080150	8G	1 1/2"	100	✓
ISS04RO#100050	10G	1/2"	100	✓
ISS04RO#100075	10G	3/4"	100	✓
ISS04RO#100100	10G	1"	100	✓
ISS04RO#100150	10G	1 1/2"	100	✓



## POST HEX SOCKET COUNTERSUNK SELF TAPPING SCREW

Part	Size	Length	Recess	Pack	Stock
		(inch)	A/F		
ISS04CH#080050	8G	1/2"	5/32	100	✓
ISS04CH#080075	8G	3/4"	5/32	100	✓
ISS04CH#080100	8G	1"	5/32	100	✓
ISS04CH#080150	8G	1 1/2"	5/32	100	✓
ISS04CH#100050	10G	1/2"	5/32	100	✓
ISS04CH#100075	10G	3/4"	5/32	100	✓
ISS04CH#100100	10G	1"	5/32	100	✓
ISS04CH#100150	10G	1 1/2"	5/32	100	✓

# Post Torx® Socket Self Tapping Screw



## POST TORX® SOCKET COUNTERSUNK SELF TAPPING SCREW

Part	Size	Length (inch)	Recess Size	Pack	Stock 304/A2
ISS04CT#060050	6G	1/2"	T10	100	✓
ISS04CT#060075	6G	3/4"	T10	100	✓
ISS04CT#060100	6G	1"	T10	100	✓
ISS04CT#080050	8G	1/2"	T15	100	✓
ISS04CT#080075	8G	3/4"	T15	100	✓
ISS04CT#080100	8G	1"	T15	100	✓
ISS04CT#080125	8G	1 1/4"	T15	100	✓
ISS04CT#100050	10G	1/2"	T20	100	✓
ISS04CT#100075	10G	3/4"	T20	100	✓
ISS04CT#100100	10G	1"	T20	100	✓
ISS04CT#100125	10G	1 1/4"	T20	100	✓
ISS04CT#100150	10G	1 1/2"	T20	100	✓
ISS04CT#140075	14G	3/4"	T30	100	✓
ISS04CT#140100	14G	1"	T30	100	✓
ISS04CT#140150	14G	1 1/2"	T30	100	✓

## POST TORX® SOCKET BUTTON SELF TAPPING SCREW

Part	Size	Length (inch)	Recess Size	Pack	Stock 304/A2
ISS04BT#060050	6G	1/2"	T10	100	✓
ISS04BT#060075	6G	3/4"	T10	100	✓
ISS04BT#060100	6G	1"	T10	100	✓
ISS04BT#060150	6G	1 1/2"	T10	100	✓
ISS04BT#080050	8G	1/2"	T15	100	✓
ISS04BT#080075	8G	3/4"	T15	100	✓
ISS04BT#080100	8G	1"	T15	100	✓
ISS04BT#080125	8G	1 1/4"	T15	100	✓
ISS04BT#100050	10G	1/2"	T25	100	✓
ISS04BT#100075	10G	3/4"	T25	100	✓
ISS04BT#100100	10G	1"	T25	100	✓
ISS04BT#100125	10G	1 1/4"	T25	100	✓
ISS04BT#100150	10G	1 1/2"	T25	100	✓
ISS04BT#140075	14G	3/4"	T27	100	✓
ISS04BT#140100	14G	1"	T27	100	✓
ISS04BT#140150	14G	1 1/2"	T27	100	✓



?? = 04: 304 Stainless  
16: 316 Stainless

# Post Hex / Torx® Socket Bit

## IMPERIAL POST HEX SOCKET BIT

Part	Size	Pack	Stock
ISBPH009	3/32"	1	✓
ISBPH012	1/8"	1	✓
ISBPH015	5/32"	1	✓
ISBPH018	3/16"	1	✓
ISBPH022	7/32"	1	✓

## METRIC POST HEX SOCKET BIT

Part	Size	Pack	Stock
ISBPHM025	M2.5	1	✓
ISBPHM03	M3	1	✓
ISBPHM04	M4	1	✓
ISBPHM05	M5	1	✓
ISBPHM06	M6	1	✓

## POST TORX® SOCKET BIT

Part	Size	Pack	Stock
ISBPT10	T10	1	✓
ISBPT15	T15	1	✓
ISBPT20	T20	1	✓
ISBPT25	T25	1	✓
ISBPT27	T27	1	✓
ISBPT30	T30	1	✓
ISBPT40	T40	1	✓
ISBPT50	T50	1	✓



# Post Hex / Torx® Socket Key



## IMPERIAL POST HEX SOCKET KEY

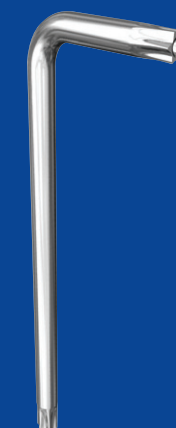
Part	Size	Pack	Stock
ISKPH009	3/32"	1	✓
ISKPH012	1/8"	1	✓
ISKPH015	5/32"	1	✓
ISKPH018	3/16"	1	✓
ISKPH022	7/32"	1	✓

## METRIC POST HEX SOCKET KEY

Part	Size	Pack	Stock
ISKPHM025	M2.5	1	✓
ISKPHM03	M3	1	✓
ISKPHM04	M4	1	✓
ISKPHM05	M5	1	✓
ISKPHM06	M6	1	✓

## POST TORX® SOCKET KEY

Part	Size	Pack	Stock
ISKPT10	T10	1	✓
ISKPT15	T15	1	✓
ISKPT20	T20	1	✓
ISKPT25	T25	1	✓
ISKPT27	T27	1	✓
ISKPT30	T30	1	✓
ISKPT40	T40	1	✓
ISKPT45	T45	1	✓
ISKPT50	T50	1	✓





# Split Pin

## METRIC SPLIT PIN DIN 94

Part	Size	Length (mm)	Pack	Stock 304/A2
QPS04PM0160010	M1.6	10	200	✓
QPS04PM0160012	M1.6	12	200	✓
QPS04PM0160014	M1.6	14	200	✓
QPS04PM0160016	M1.6	16	200	✓
QPS04PM0160020	M1.6	20	200	✓
QPS04PM0160025	M1.6	25	200	✓
QPS04PM0160032	M1.6	32	200	✓
QPS04PM0160040	M1.6	40	200	✓
QPS04PM020012	M2	12	200	✓
QPS04PM020016	M2	16	200	✓
QPS04PM020020	M2	20	200	✓
QPS04PM020025	M2	25	200	✓
QPS04PM020032	M2	32	200	✓
QPS04PM020040	M2	40	200	✓
QPS04PM0250012	M2.5	12	200	✓
QPS04PM0250016	M2.5	16	200	✓
QPS04PM0250020	M2.5	20	200	✓
QPS04PM0250025	M2.5	25	200	✓
QPS04PM0250032	M2.5	32	200	✓
QPS04PM0250036	M2.5	36	200	✓
QPS04PM0250040	M2.5	40	200	✓
QPS04PM0250050	M2.5	50	200	✓
QPS04PM0320012	M3.2	12	200	✓
QPS04PM0320016	M3.2	16	200	✓
QPS04PM0320020	M3.2	20	200	✓
QPS04PM0320025	M3.2	25	200	✓
QPS04PM0320032	M3.2	32	200	✓
QPS04PM0320036	M3.2	36	200	✓
QPS04PM0320040	M3.2	40	200	✓
QPS04PM0320045	M3.2	45	200	✓
QPS04PM0320050	M3.2	50	200	✓
QPS04PM0320063	M3.2	63	200	✓
QPS04PM0320080	M3.2	80	200	✓

# Split Pin



## METRIC SPLIT PIN DIN 94

Part	Size	Length (mm)	Pack	Stock 304/A2
QPS04PM040020	M4	20	100	✓
QPS04PM040025	M4	25	100	✓
QPS04PM040032	M4	32	100	✓
QPS04PM040036	M4	36	100	✓
QPS04PM040040	M4	40	100	✓
QPS04PM040045	M4	45	100	✓
QPS04PM040050	M4	50	100	✓
QPS04PM040063	M4	63	100	✓
QPS04PM040080	M4	80	100	✓
QPS04PM050020	M5	20	100	✓
QPS04PM050025	M5	25	100	✓
QPS04PM050032	M5	32	100	✓
QPS04PM050036	M5	36	100	✓
QPS04PM050040	M5	40	100	✓
QPS04PM050045	M5	45	100	✓
QPS04PM050050	M5	50	100	✓
QPS04PM050063	M5	63	100	✓
QPS04PM050071	M5	71	100	✓
QPS04PM050080	M5	80	100	✓
QPS04PM050090	M5	90	100	✓
QPS04PM050100	M5	100	100	✓
QPS04PM0630050	M6.3	50	100	✓



			PITCH (MM)				THREADS PER INCH			
	Size		Coarse	Fine	Extra Fine	UNC	UN8	UNF	BSW	BSF
M1.6	-	#0	0.35	-	-	-	-	80	-	-
M2	-	#1	0.4	-	-	-	-	72	-	-
-	-	#2	-	-	-	56	-	64	-	-
M2.5	-	#3	0.45	-	-	48	-	56	-	-
-	-	#4	-	-	-	40	-	48	-	-
M3	1/8"	#5	0.5	-	-	40	-	44	40	-
M3.5	-	#6	0.6	-	-	32	-	40	-	-
M4	-	#8	0.7	-	-	32	-	36	-	-
M5	3/16"	#10	0.8	-	-	24	-	32	24	32
-	-	#12	-	-	-	24	-	28	-	-
M6	1/4"	-	1	-	-	20	-	28	20	26
M8	5/16"	-	1.25	1	-	18	-	24	18	22
M10	3/8"	-	1.5	1.25	1	16	-	24	16	20
-	7/16"	-	-	-	-	14	-	20	14	18
M12	1/2"	-	1.75	1.5	1.25	13	-	20	12	16
M14	9/16"	-	2	1.5	-	12	-	18	12	16
M16	5/8"	-	2	1.5	-	11	-	18	11	14
M18	-	-	2.5	1.5	-	-	-	-	-	-
M20	3/4"	-	2.5	1.5	-	10	-	16	10	12
M22	7/8"	-	2.5	1.5	-	9	-	14	9	11
M24	1"	-	3	2	-	8	8	12 (14)	8	10
M27	1 1/8"	-	3	2	-	7	8	12	7	9
M30	1 1/4"	-	3.5	2	-	7	8	12	7	9
M33	1 3/8"	-	3.5	2	-	6	8	12	6	8
M36	1 1/2"	-	4	3	-	6	8	12	6	8
M39	1 5/8"	-	4	3	-	-	8	-	5	8
M42	-	-	4.5	-	-	-	-	-	-	-
M45	1 3/4"	-	4.5	-	-	5	8	-	5	7
M48	1 7/8"	-	5	-	-	-	8	-	-	-
M52	2"	-	5	-	-	4.5	8	-	4.5	7
M56	2 1/4"	-	5.5	-	-	4.5	8	-	4	6
M60	-	-	5.5	-	-	-	-	-	-	-
M64	2 1/2"	-	6	-	-	4	8	-	4	6
M72	2 3/4"	-	6	-	-	4	8	-	3.5	6
M80	3"	-	6	-	-	4	8	-	3.5	5
-	3 1/4"	-	-	-	-	4	8	-	3.25	5
M90	3 1/2"	-	6	-	-	4	8	-	3.25	4.5
-	3 3/4"	-	-	-	-	4	8	-	3	4.5
M100	4"	-	6	-	-	4	8	-	3	4.5

# Terms and Conditions



The Company and the Customer each agree with the other as follows:

## DEFINITIONS

Company means Hobson Engineering Pty Limited (A.B.N. 38 000 289 958).

Customer means the party described as the customer in the Delivery Docket as amended by the Invoice.

Delivery Docket means the document furnished by the Company to the Customer.

GST has the same meaning as given in A New Tax System (Goods and Services Tax) Act 1999 ("Act").

Invoice means a tax invoice (as defined in the Act) furnished by the Company to the Customer in respect of the product.

Product means the goods described as the product in the Delivery Docket as amended by the Invoice.

Purchase Order means the request by the Customer for the Product which is accepted by the Company.

Sum means the price and other monies payable for the Product together with GST payable on the supply of the Product.

## SUPPLY

The Company supplies to the Customer the Product in accordance with these terms and conditions as varied in writing by the Company. Any variation in writing by the Company shall take precedence to these terms and conditions. We reserve the right to supply 316 stainless steel in lieu of 304 stainless steel.

## PRICE

The Sum is set forth in the Purchase Order as amended by the Invoice. The Customer agrees that the Sum set forth in the Purchase Order may be amended by the Invoice in respect of the following:

arithmetic error; and

GST payable on the supply of the Product not included or incorrectly calculated in the Sum.

In addition to the price the Customer agrees, if so requested by the Company, to pay:

any increase in any GST taxes and duties which the Company may be required to collect or pay in respect of the Product after the date of the Delivery Docket; and

interest accruing on a daily basis on the unpaid balance of the Sum from the due date for payment until actual receipt at the rate of 1 per cent per month.

## PAYMENT

The Customer must pay the Sum within 30 days of the end of the month in which the Product is delivered to the Customer unless otherwise determined by the Company.

## TITLE AND RISK

Notwithstanding any other term and condition, the parties agree that the risk of the Product passes on delivery, but title to the Product does not pass until the Sum is paid in full. Until such time as the Sum is paid in full the Customer is only at liberty to sell the Product in the ordinary course of its business as agent for the Company on the condition that it holds on trust and accounts to the Company for the proceeds thereof. Pending the passing of title to the Product the Company may require the Customer to mark the Product as being the property of the Company.

## ACCEPTANCE

The initialling or signing of the Delivery Docket by the Customer or representative of the Customer shall constitute acceptance of the Product in accord with these terms and conditions.

## RETURNS AND ALLOWANCES

The Customer must satisfy itself within 14 days of the date of delivery of the Product with the type and quantity of the Product. In the event that the Customer considers it has not received the appropriate type and or quantity of Product it must notify the Company in writing within 14 days of the date of delivery of the Product. The notice must refer to the Delivery Docket number, the delivery date, the invoice number (if applicable) and provide adequate details of the incorrect type and or quantity of Product.

As a consequence of this condition the receipt of Products by the Company, returned by the Customer does not constitute acceptance of the Product. Acceptance by the Company shall only be given by the Company, in writing, after the Product has been inspected and found satisfactory in the opinion of the Company. In the event that the Company does not accept the Product the Customer will be notified and the Product made available to the Customer. As a consequence of this condition no transport or freight costs shall be borne by the Company unless agreed to in writing by the Company.

## EXCLUSION OF WARRANTY

Nothing in this agreement excludes, restricts or modifies any condition, warranty or liability which may at any time be implied by the Trade Practices Act or Sales of Goods Act (NSW) or equivalent State or Territory legislation or any other law where to do so is illegal or would render any provision of this agreement void.

Where the Company is responsible pursuant to the aforesaid condition warranty or liability which can not be excluded the parties agree that the Company shall only be liable for the cost of repair or the resupply of the Product. Subject to this condition any express or implied condition, statement or warranty (statutory or otherwise) in respect of the Product is expressly negated and excluded.

## GENERAL

The validity, interpretation and performance of this agreement will be governed by and construed in accordance with the law of the State of New South Wales and of the Commonwealth of Australia which the parties acknowledge is the proper law of this agreement. Each of the parties irrevocably agrees that the Courts of the State of New South Wales and of the Commonwealth of Australia will have jurisdiction to hear and determine any suit, action or proceedings, and to settle any dispute, which may arise out of or in connection with this agreement and for this purpose irrevocably submits to the jurisdiction of such Courts.

**DISCOUNTS** as advised are applicable to the prices shown in this price list.

**PRICES** The resale prices or discounts referred to in the price list are recommended only and there is no obligation to comply with the recommendation. Prices are subject to GST where applicable.

Minimum invoice value is \$40.00

**SHIPPING QUANTITIES** On specially manufactured items ( $\pm 10\%$ ).

**VALIDITY ON SPECIAL QUOTATIONS** 14 days unless otherwise stated.

© Copyright 2005 – No part of this catalogue may be published without the written consent of the publishers.

Note: Due to research and development, products are continually improved. This may lead to the specifications being changed without notice.

As part of our ongoing commitment to serve your fastener needs, please let us know if there are any products which we lack.

Also, if you've got any comments on this year's Catalogue, let us know. We'll consider your feedback when we produce next year's. This catalogue is for you to use – so if it's use can be made easier, then make sure you tell us! Our aim is to have the best catalogue possible as well as the best products.

